

L'IMAGE

AU SERVICE DES APPRENTISSAGES
EN EPS.



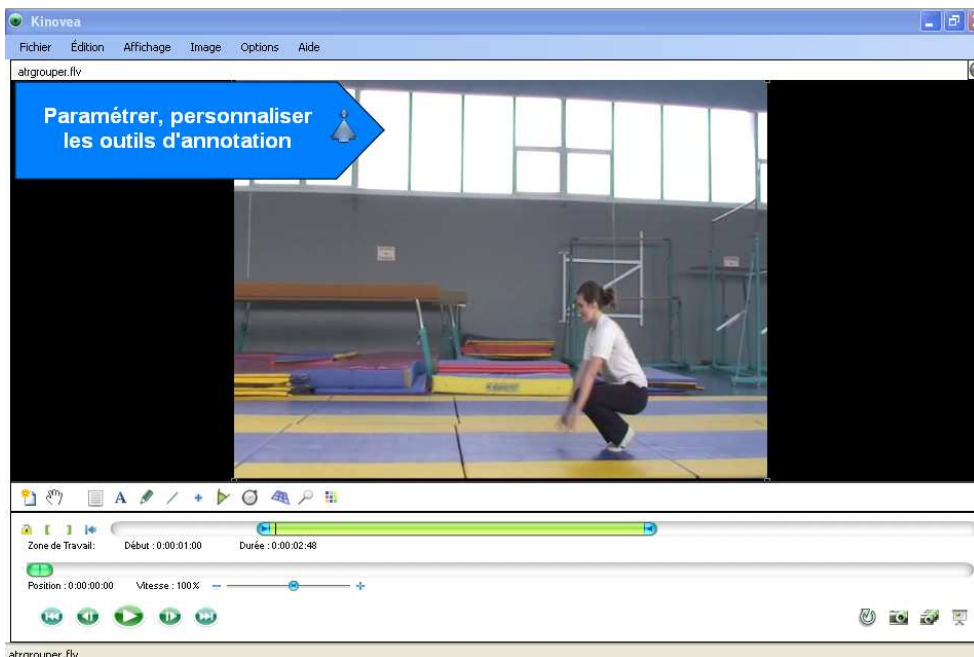
Sylvie Lallet - Avril 2009

Tutoriel n°2

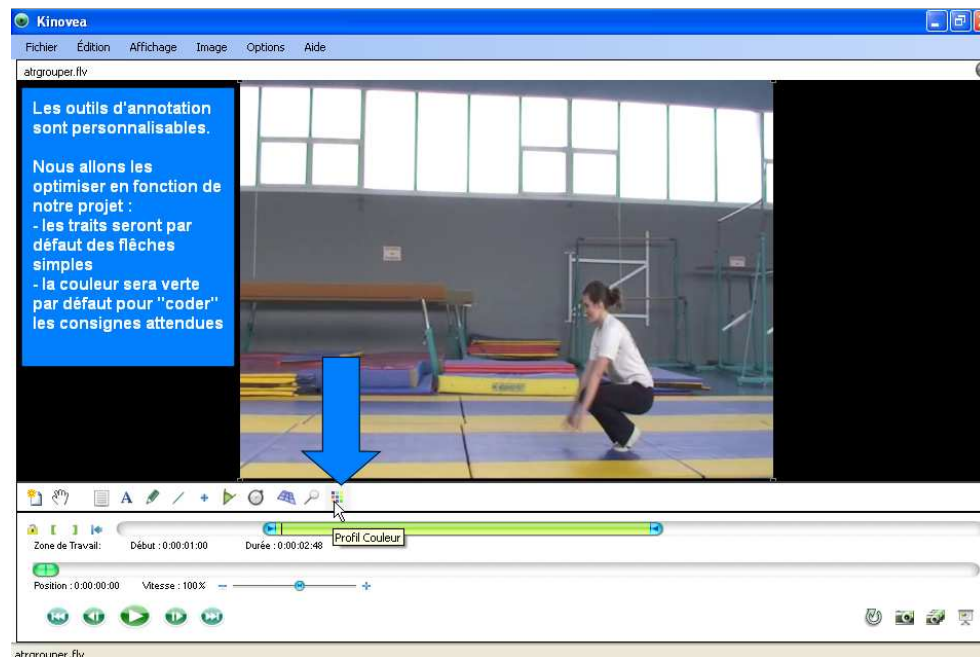
- Paramétrer, personnaliser les outils d'annotation
- Dessiner des formes de base : flèches, traits, angles
- Modifier une forme dessinée
- Ajouter une annotation sous forme de bloc de texte
- Enregistrer un projet Kinovea
- Paramétrer les options d'incrustation



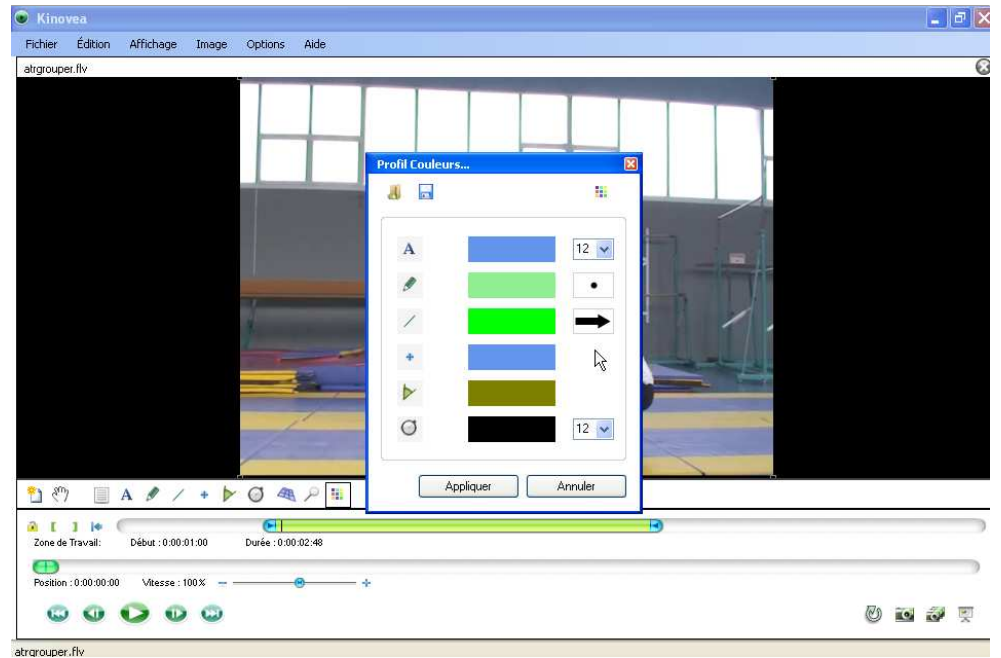
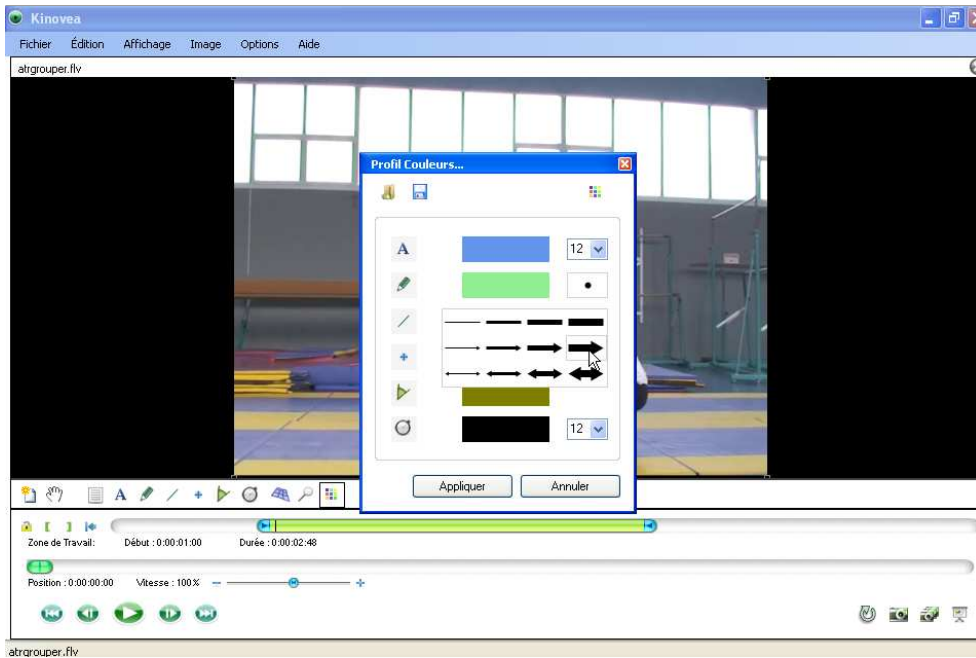
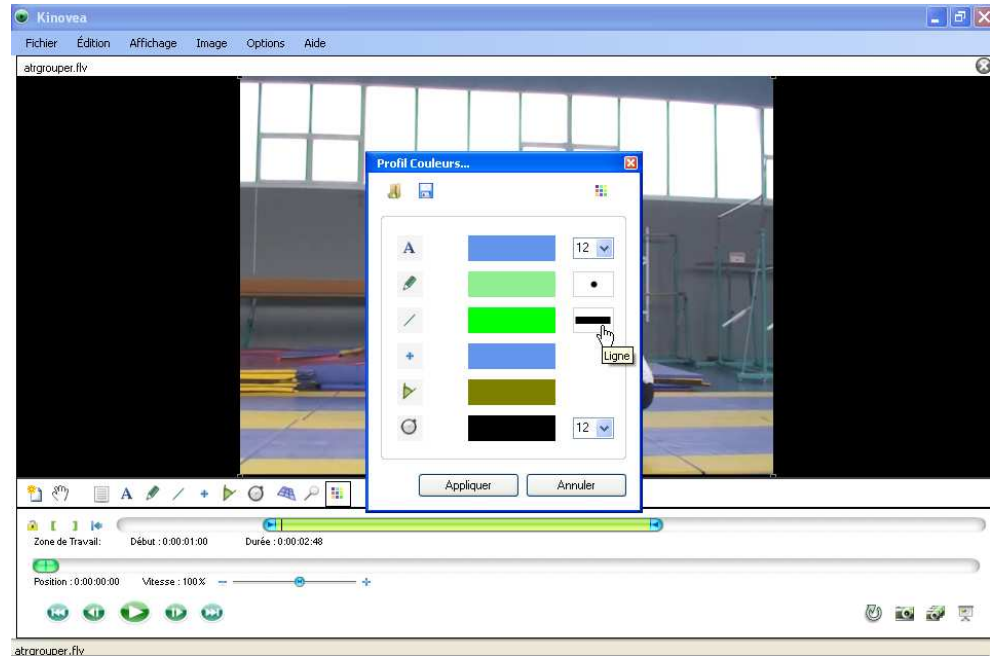
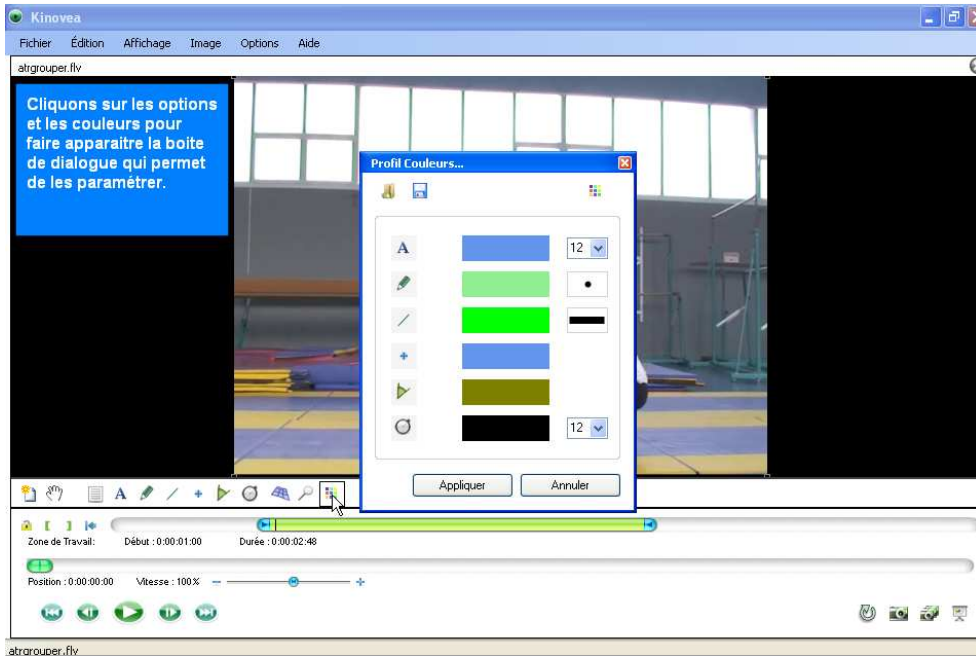
Sylvie Lallet - Avril 2009

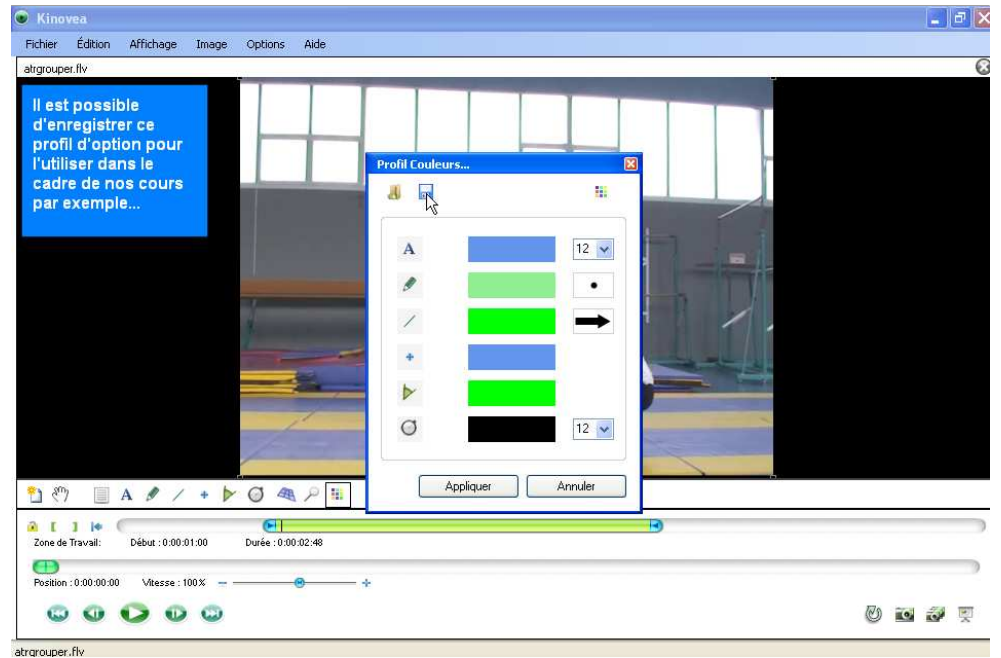
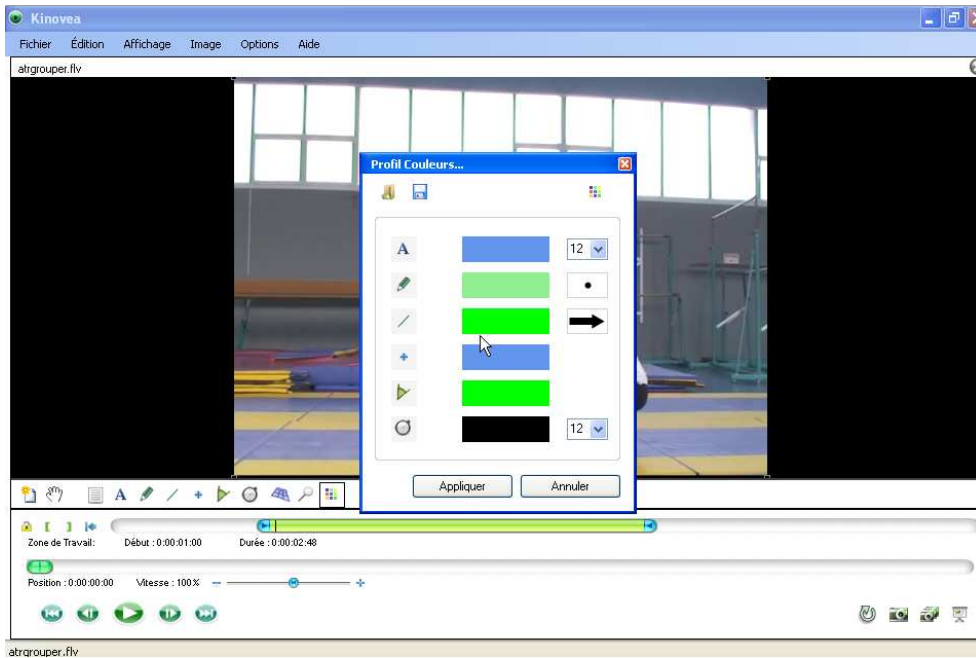
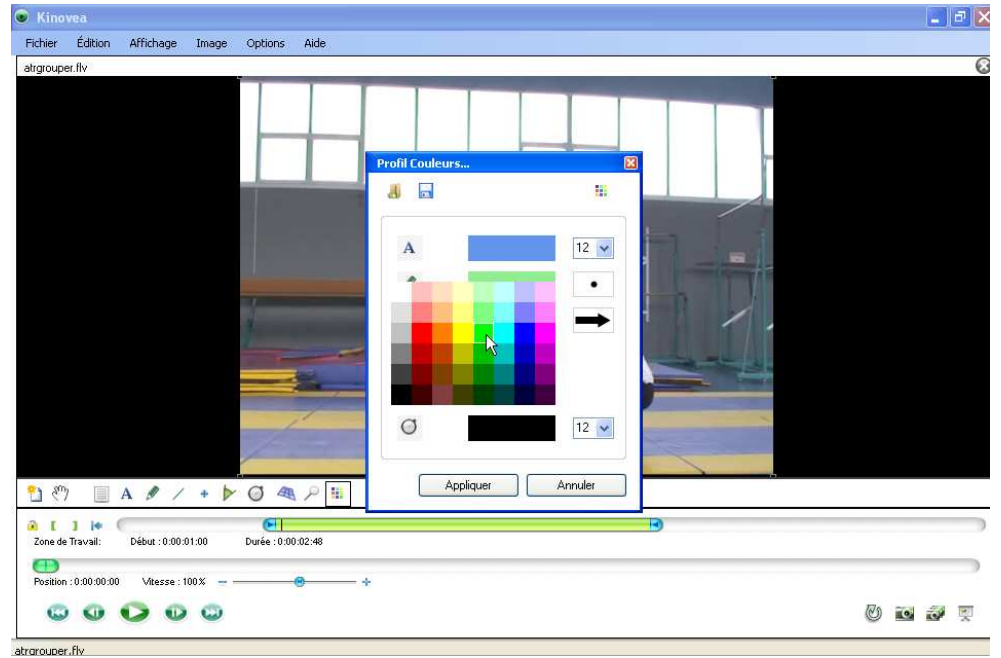
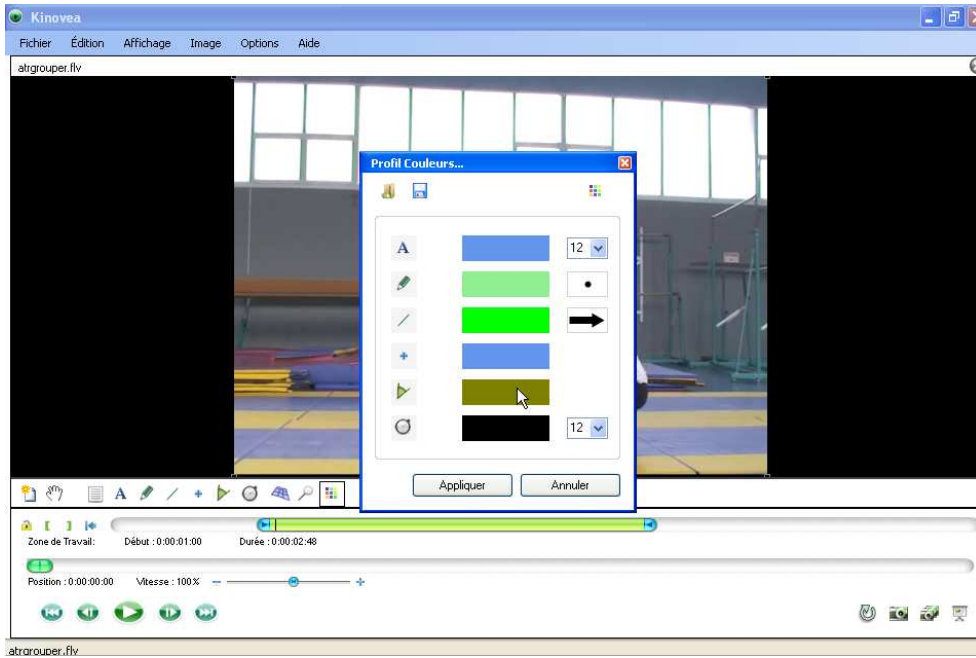


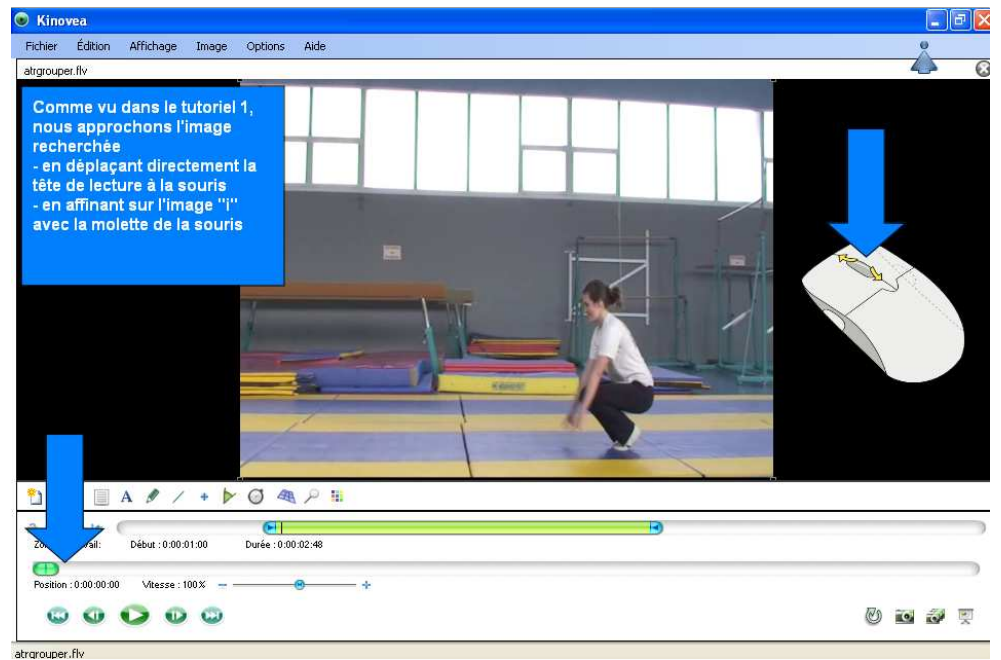
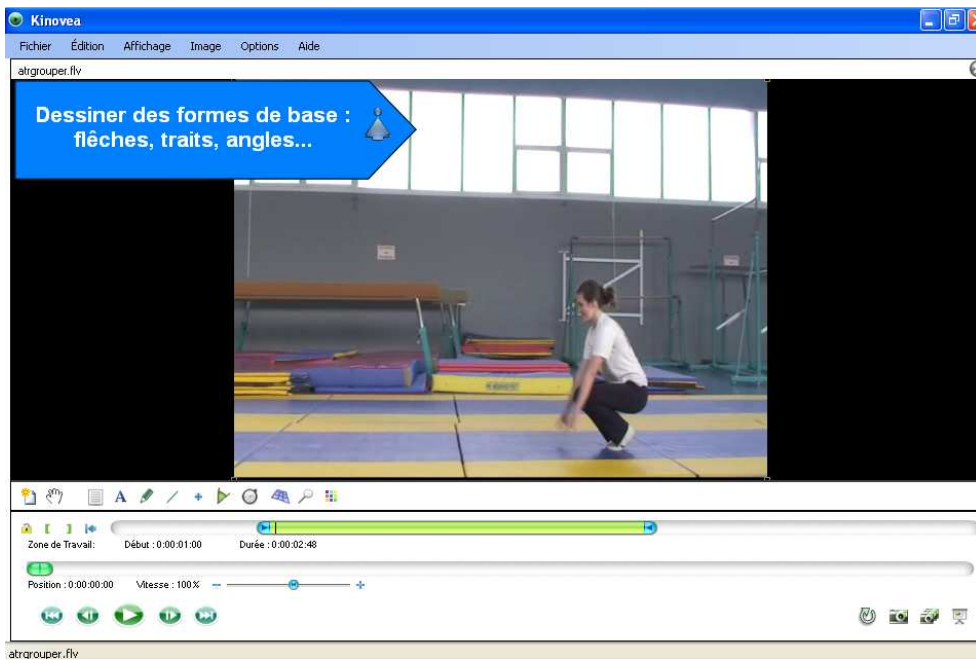
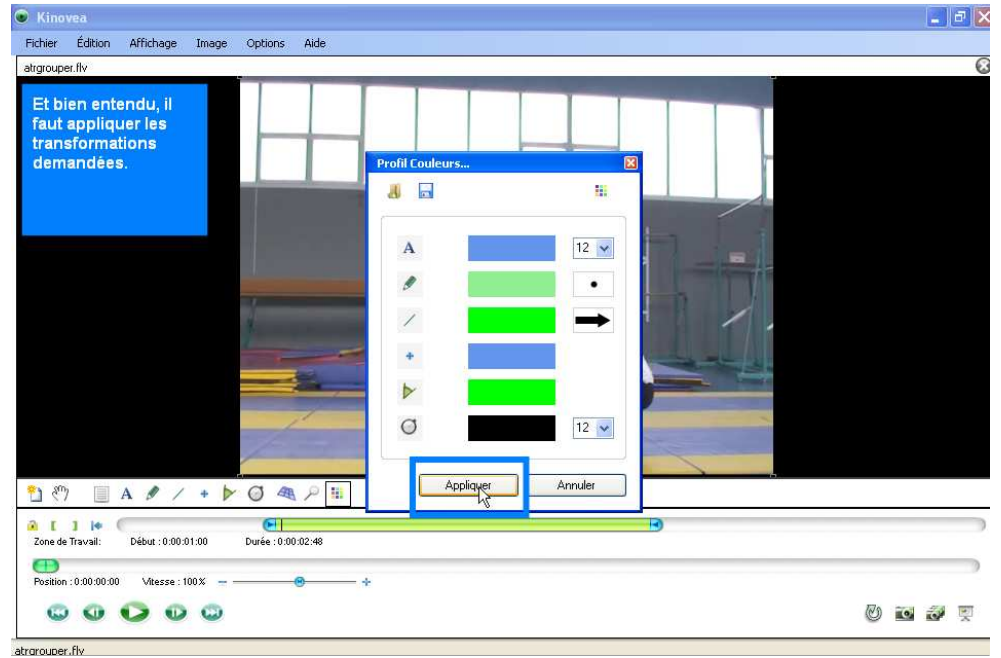
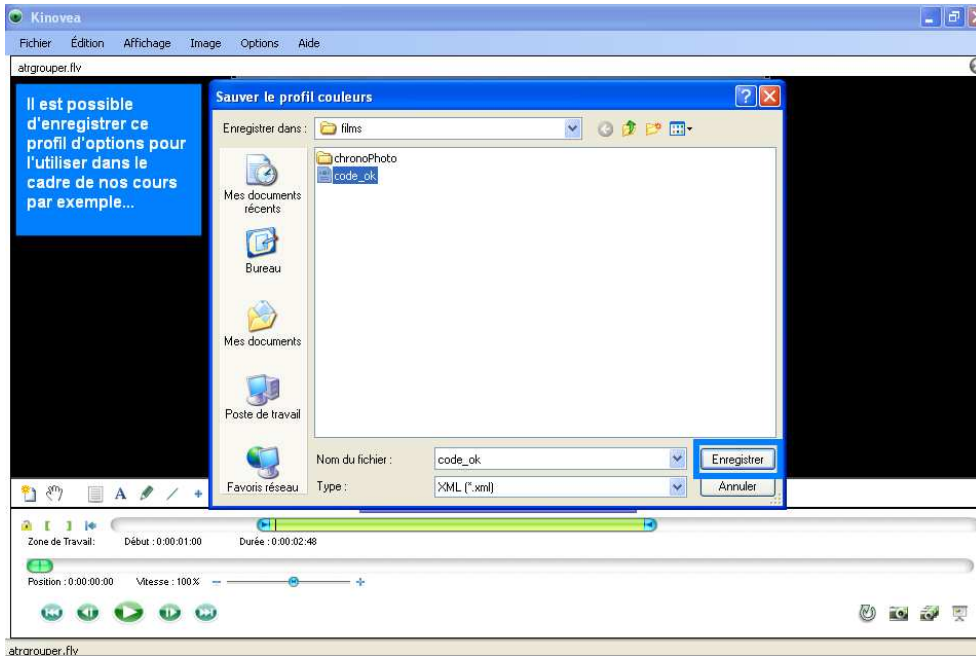
atrarouper.flv

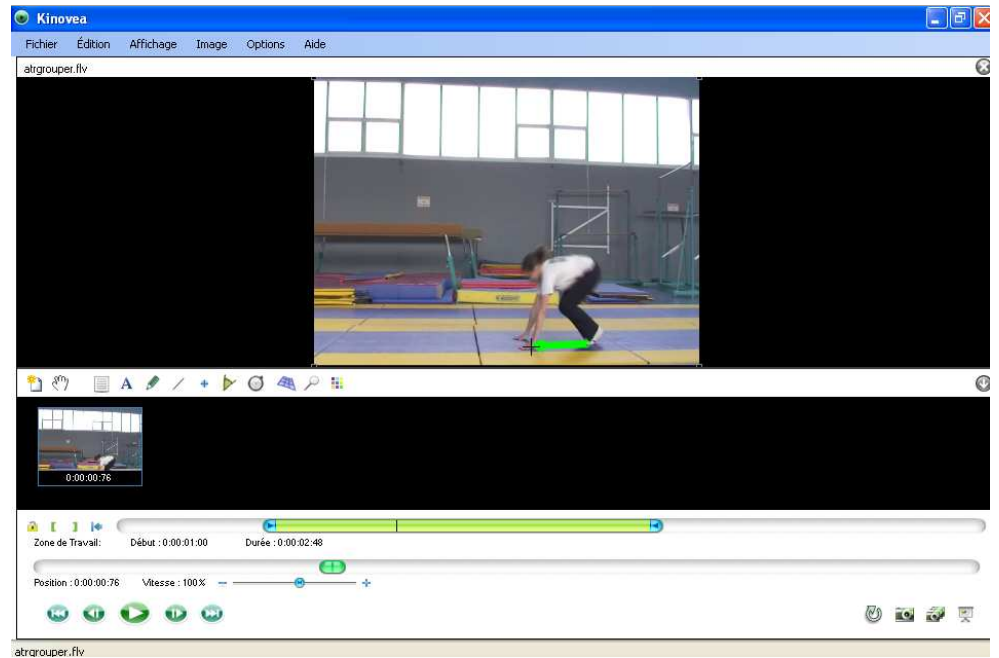
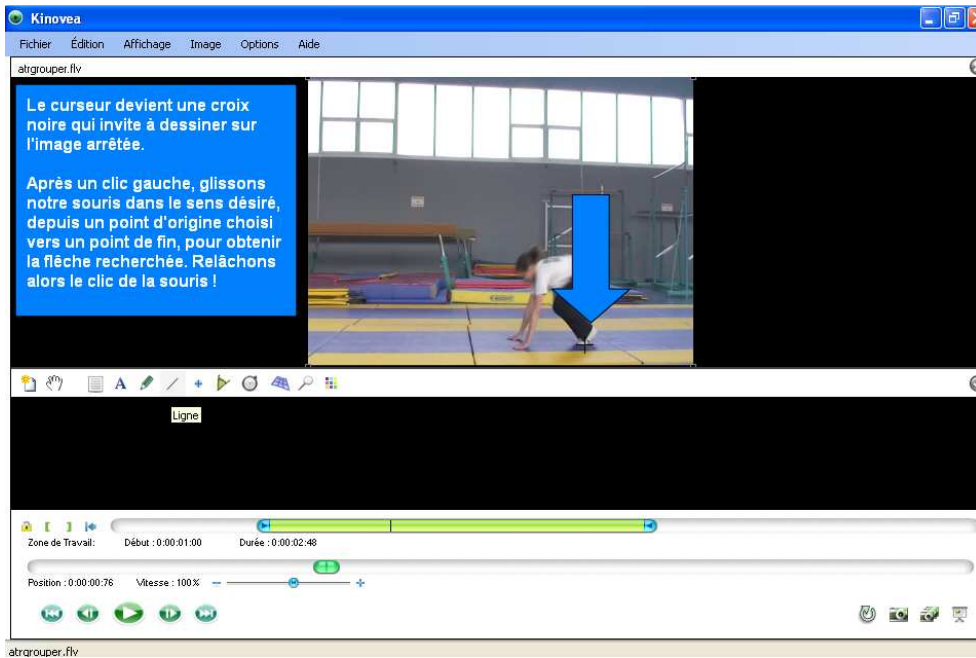
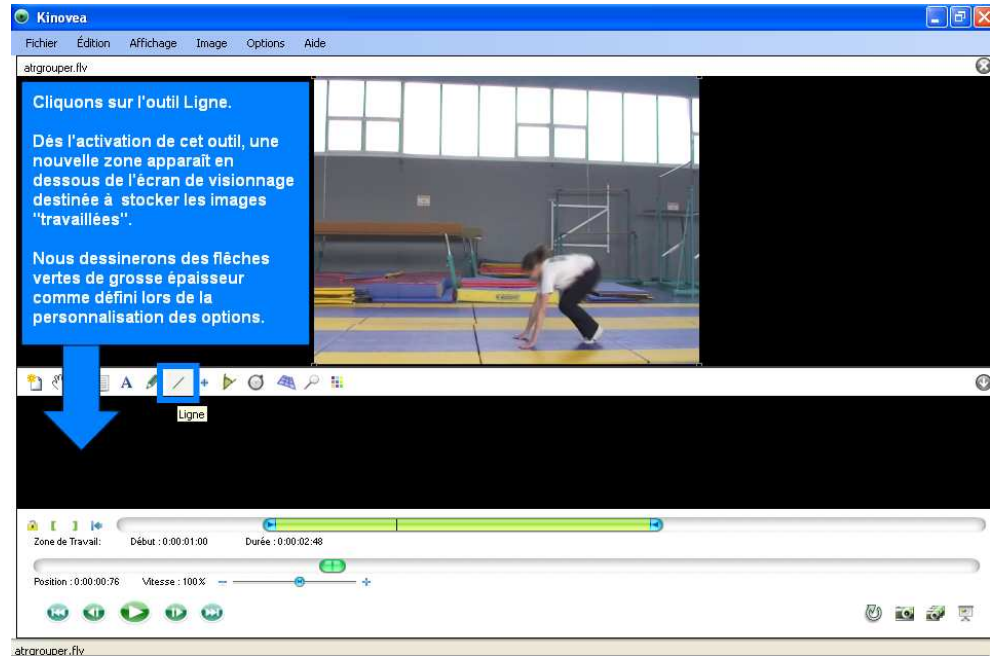
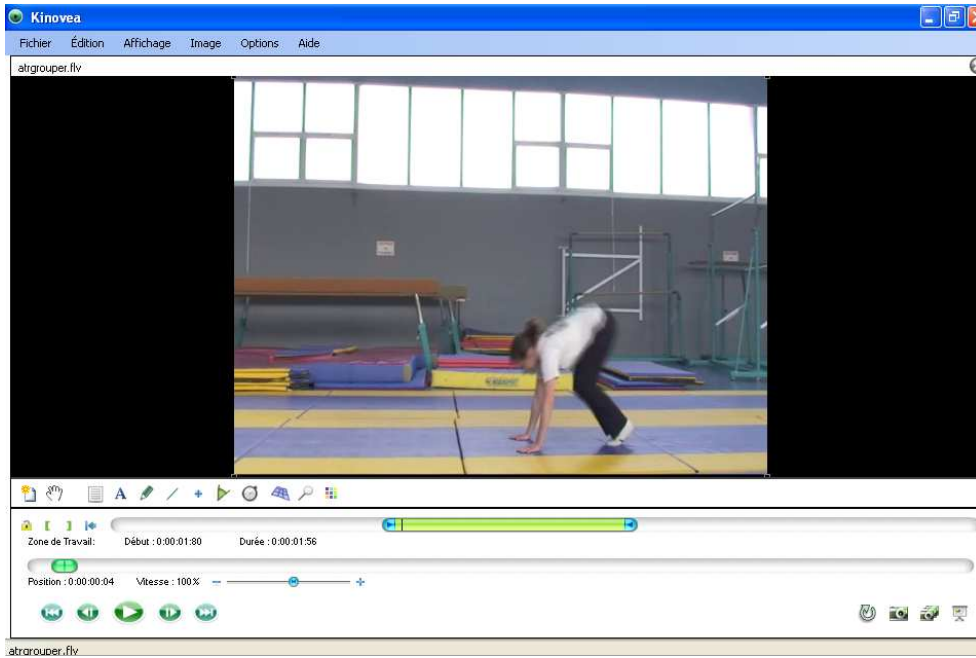


atrarouper.flv









Kinovea
Fichier Édition Affichage Image Options Aide

atrgrouper.flv

Une IMAGE CLEF est insérée automatiquement dans la zone sous l'écran.
Un clic dessus ramène toujours à cette image, à cet instant, immédiatement, quel que soit l'endroit où se trouve la tête de lecture.

0:00:00:76

Zone de Travail: Début : 0:00:01:00 Durée : 0:00:02:48

Position : 0:00:00:76 Vitesse : 100%

atrgrouper.flv

Kinovea
Fichier Édition Affichage Image Options Aide

atrgrouper.flv

Avançons avec la molette pour rechercher l'image suivante correspondant à la consigne technique définie dans notre projet d'apprentissage.
Notez que l'incrustation disparaît progressivement après une certaine "persistance".

0:00:00:76

Zone de Travail: Début : 0:00:01:00 Durée : 0:00:02:48

Position : 0:00:00:32 Vitesse : 100%

atrgrouper.flv

Kinovea
Fichier Édition Affichage Image Options Aide

atrgrouper.flv

Poursuivons nos annotations. Les outils sélectionnés restent en mémoire, nous pouvons enchaîner notre tracé de flèches à valence positive.

0:00:00:76 0:00:00:32

Zone de Travail: Début : 0:00:01:00 Durée : 0:00:02:48

Position : 0:00:00:32 Vitesse : 100%

atrgrouper.flv

Kinovea
Fichier Édition Affichage Image Options Aide

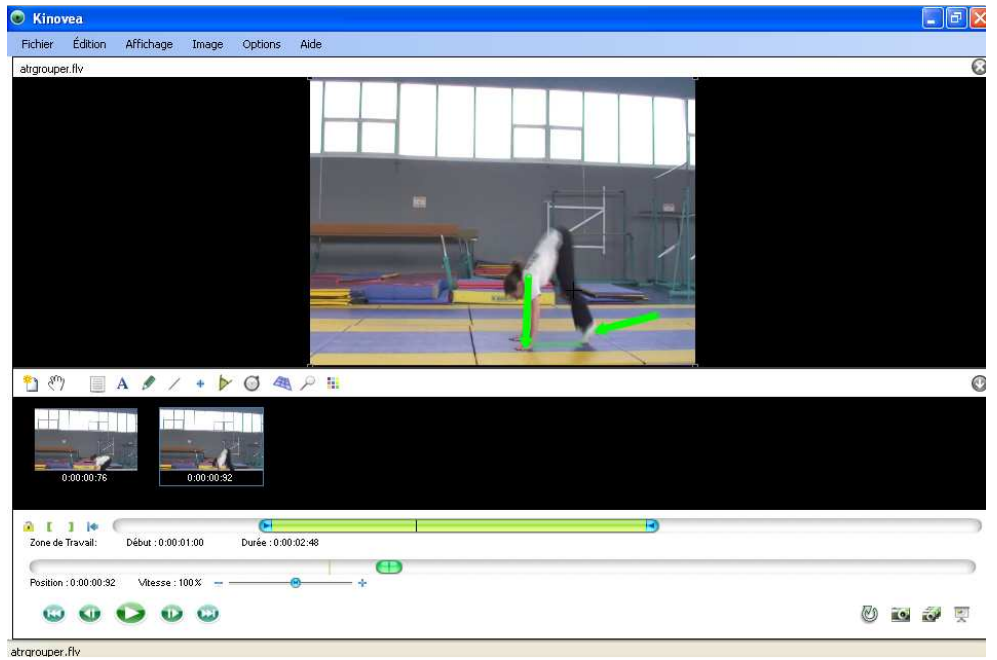
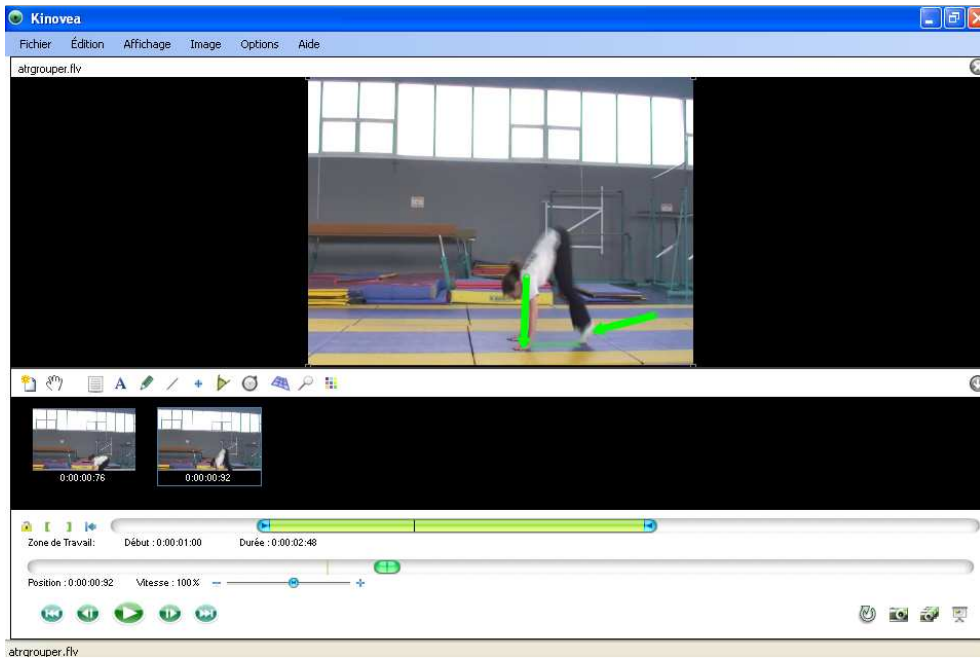
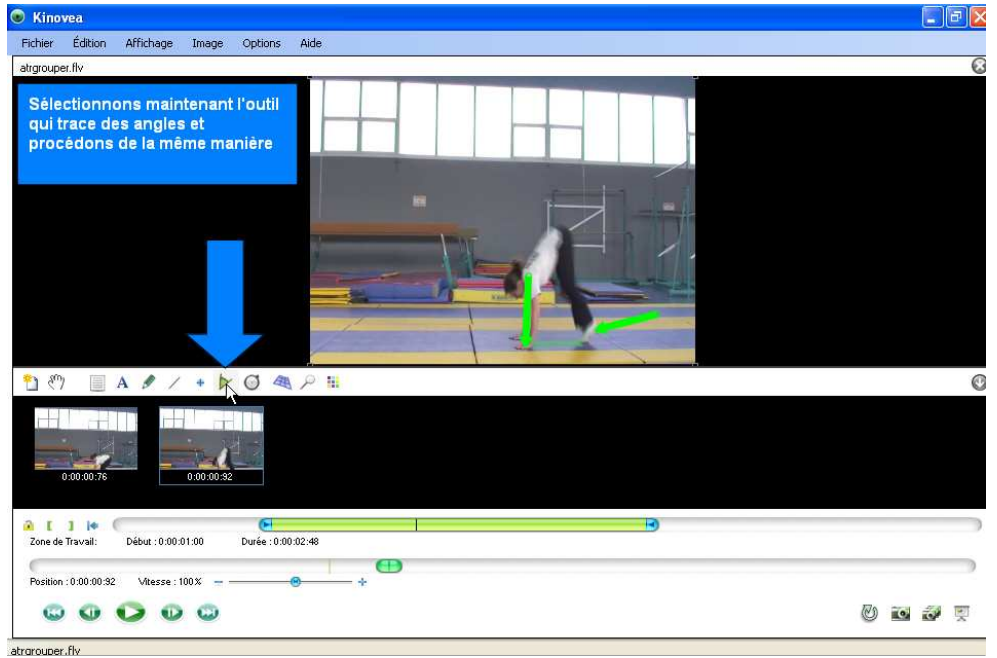
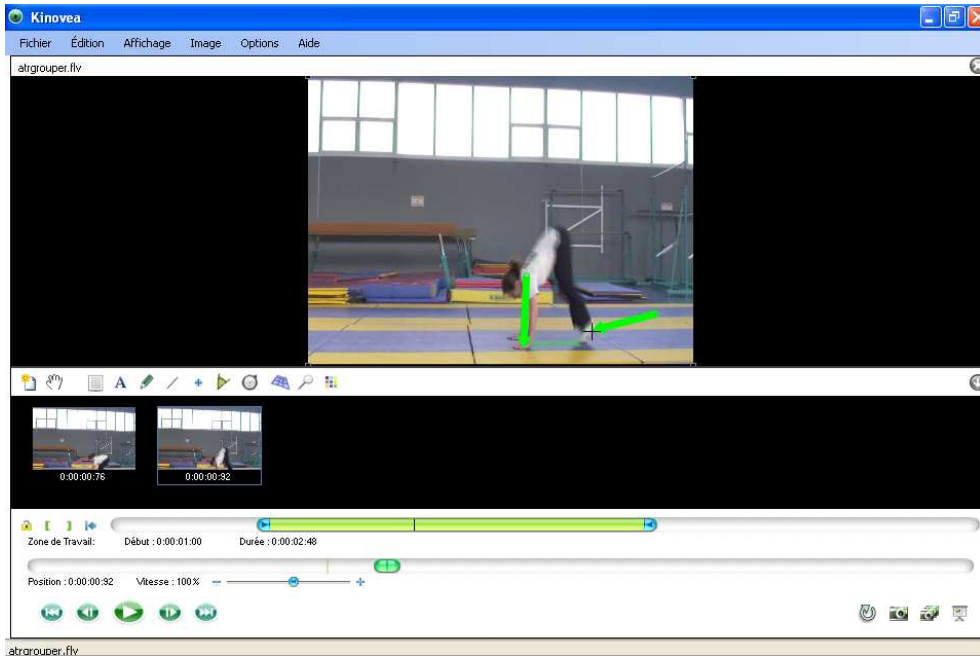
atrgrouper.flv

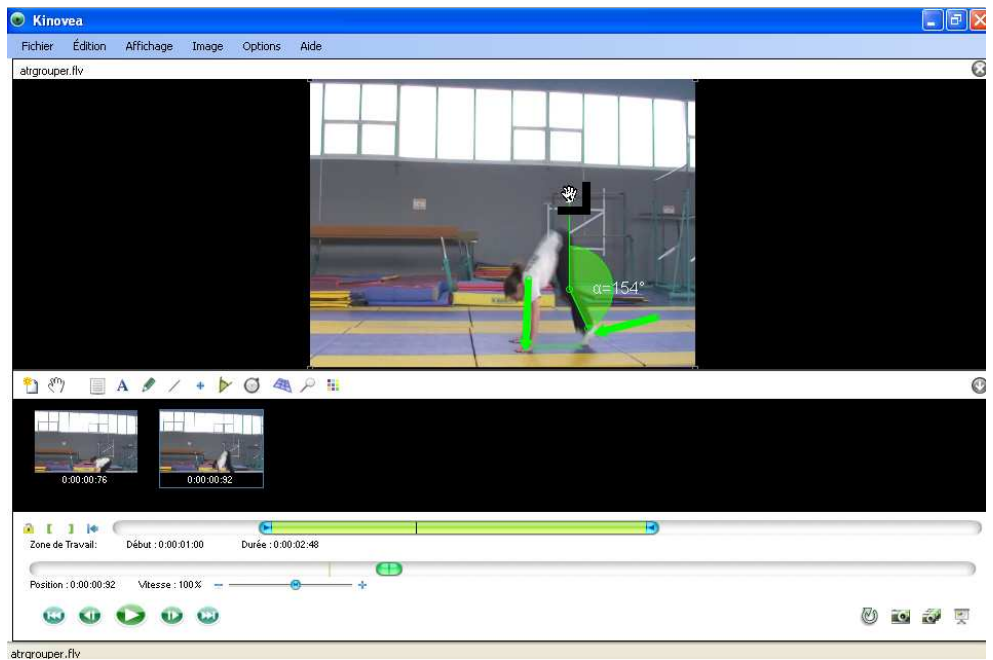
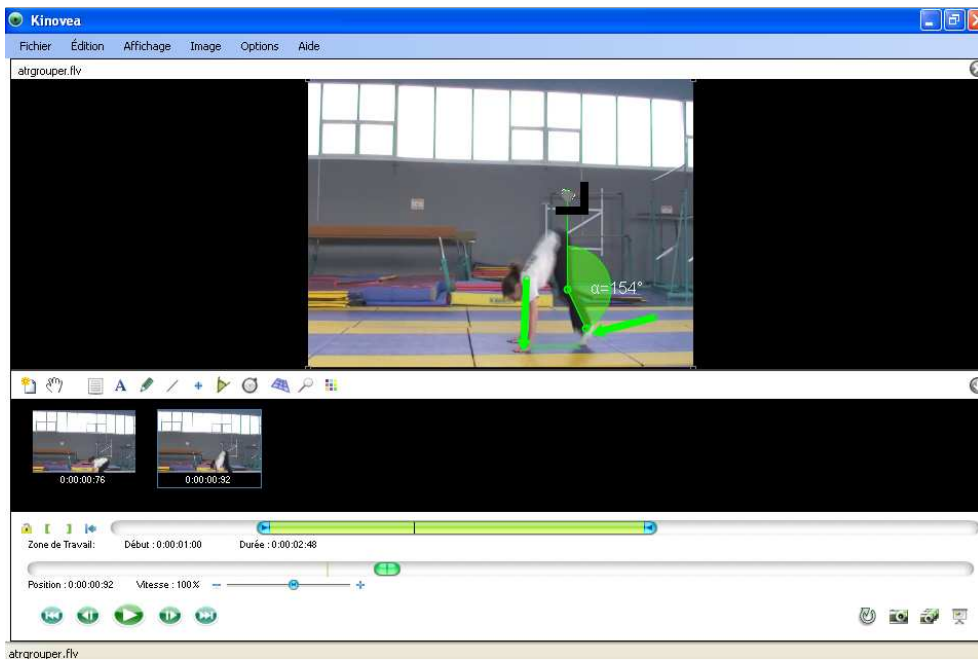
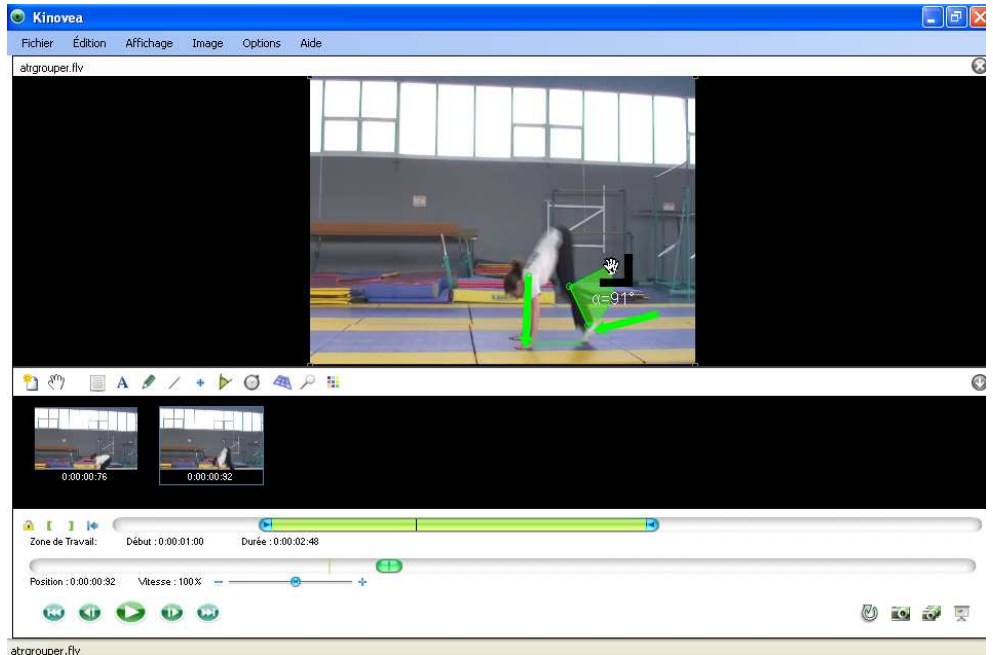
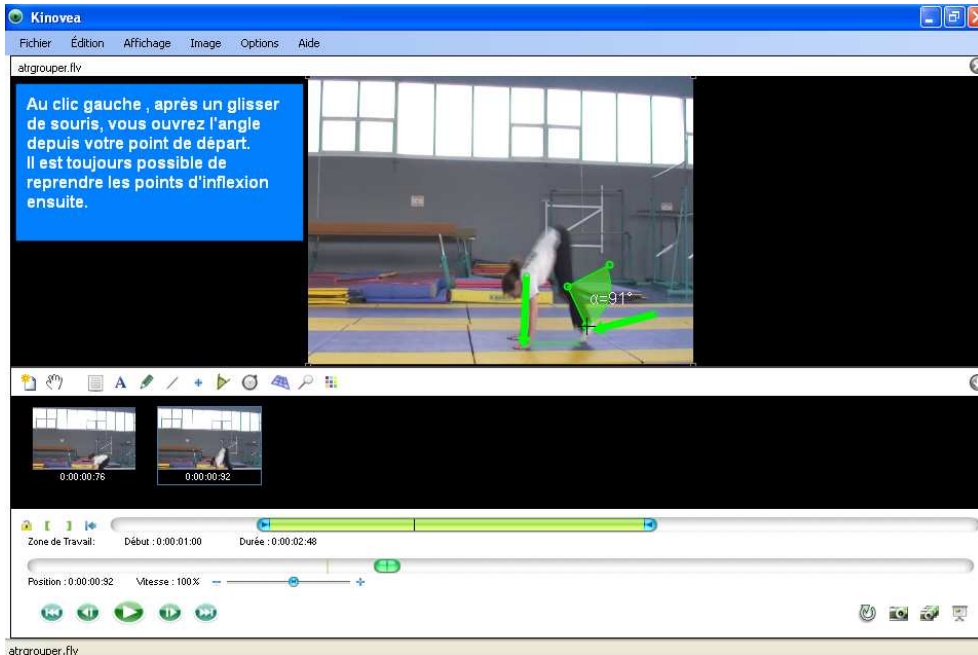
0:00:00:76 0:00:00:32

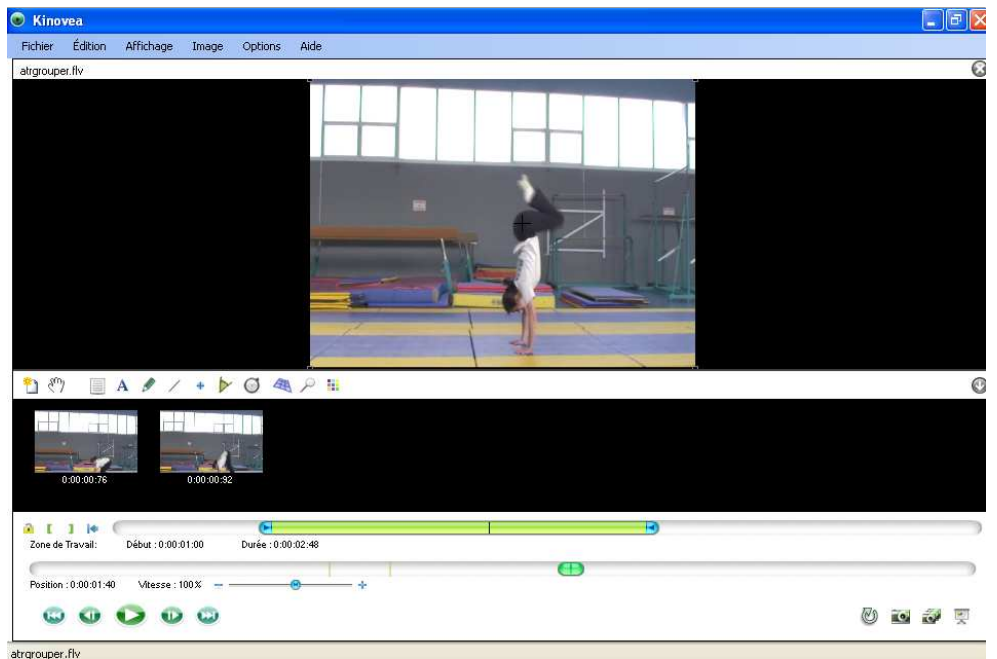
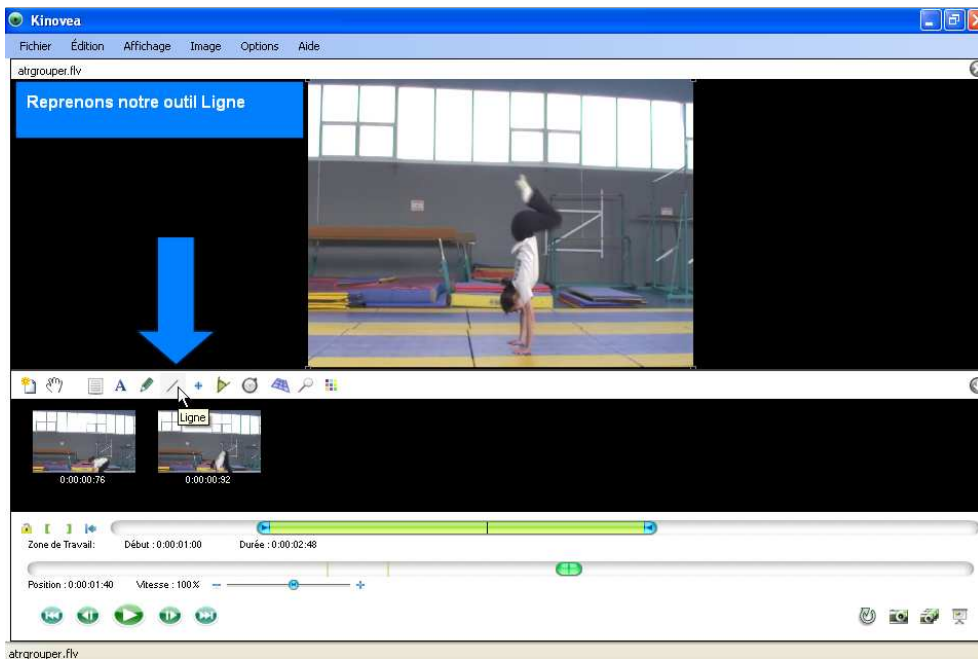
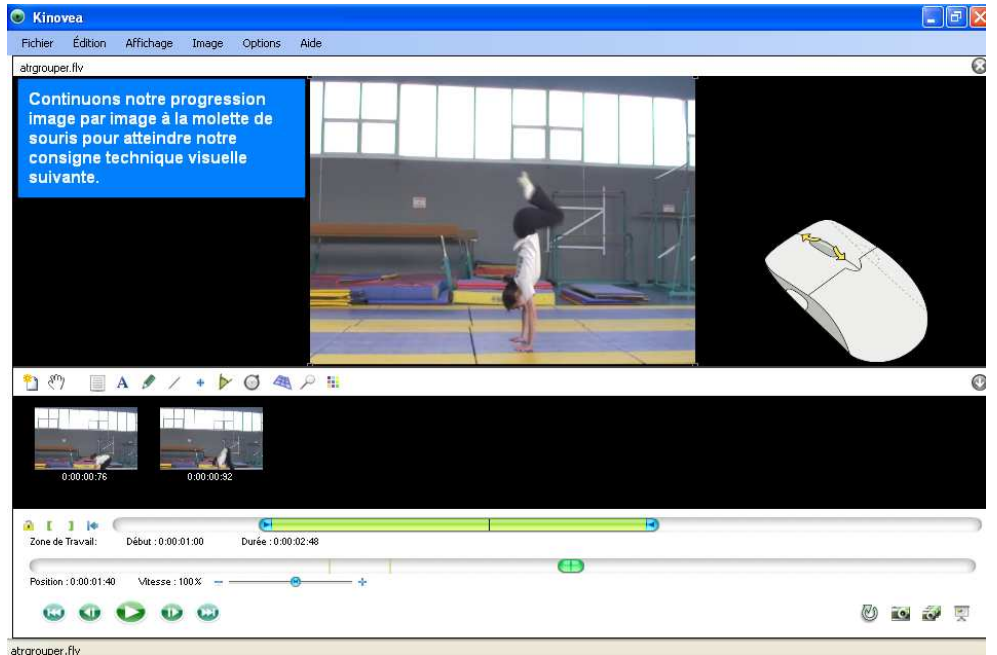
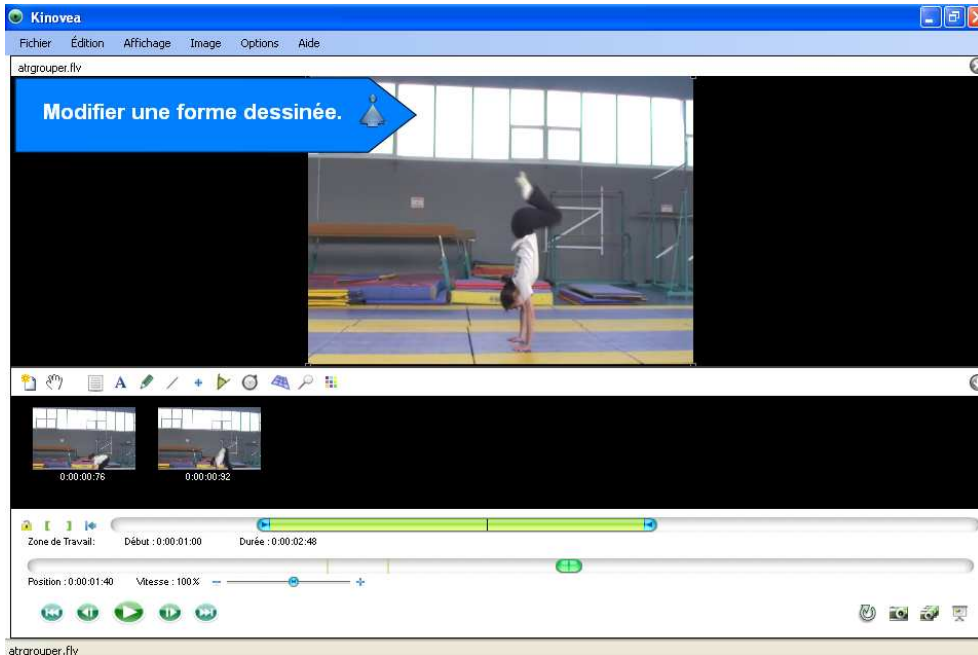
Zone de Travail: Début : 0:00:01:00 Durée : 0:00:02:48

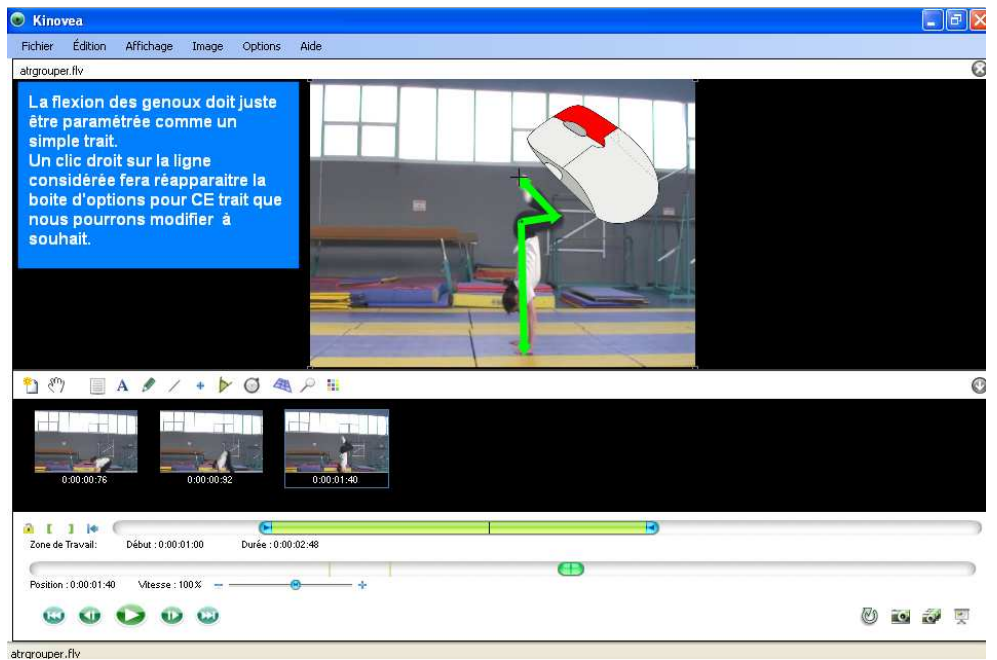
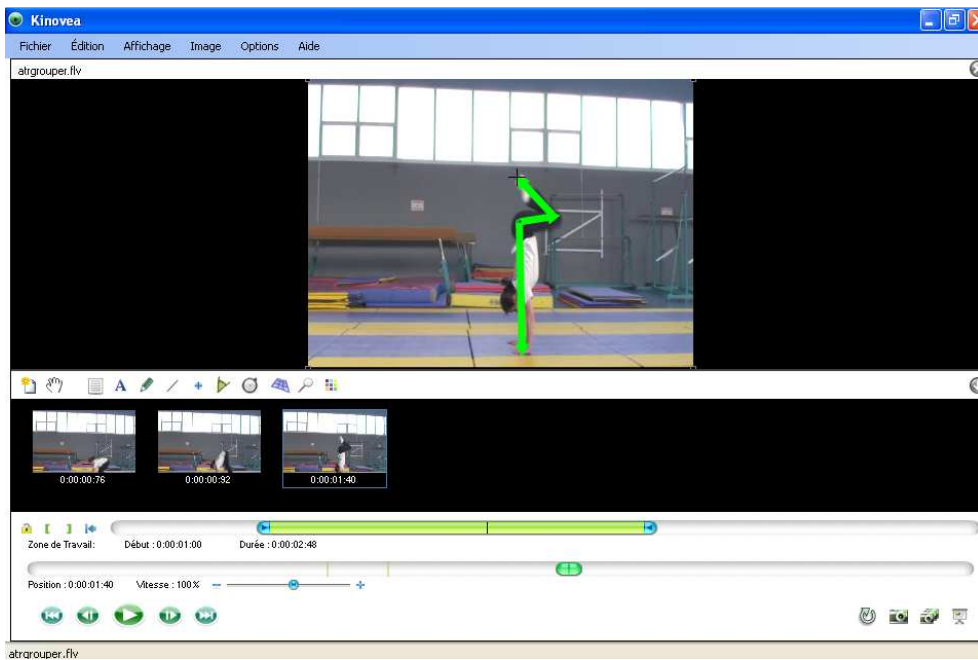
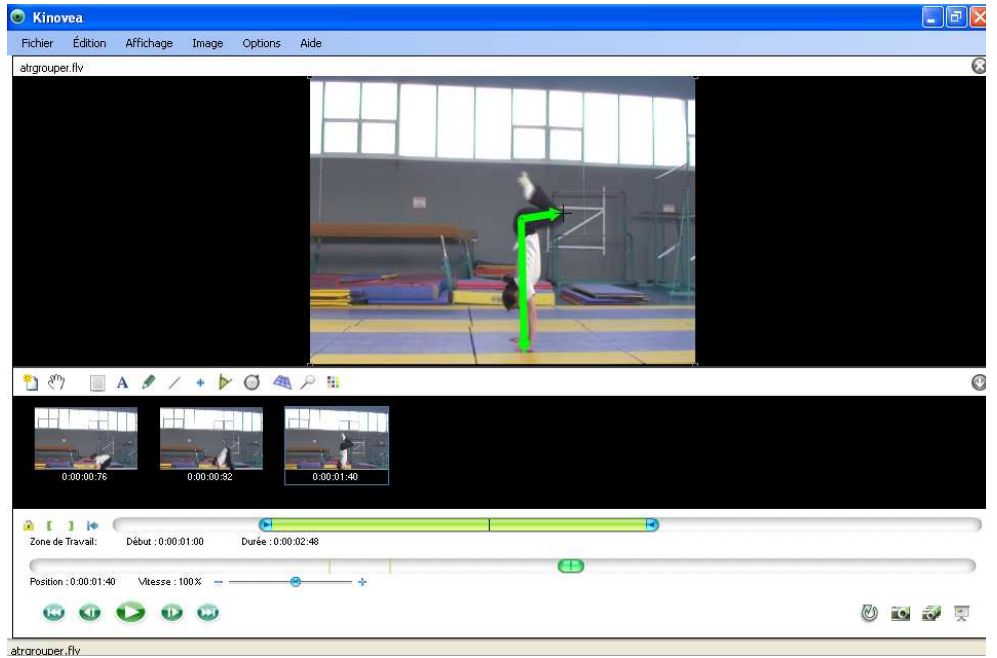
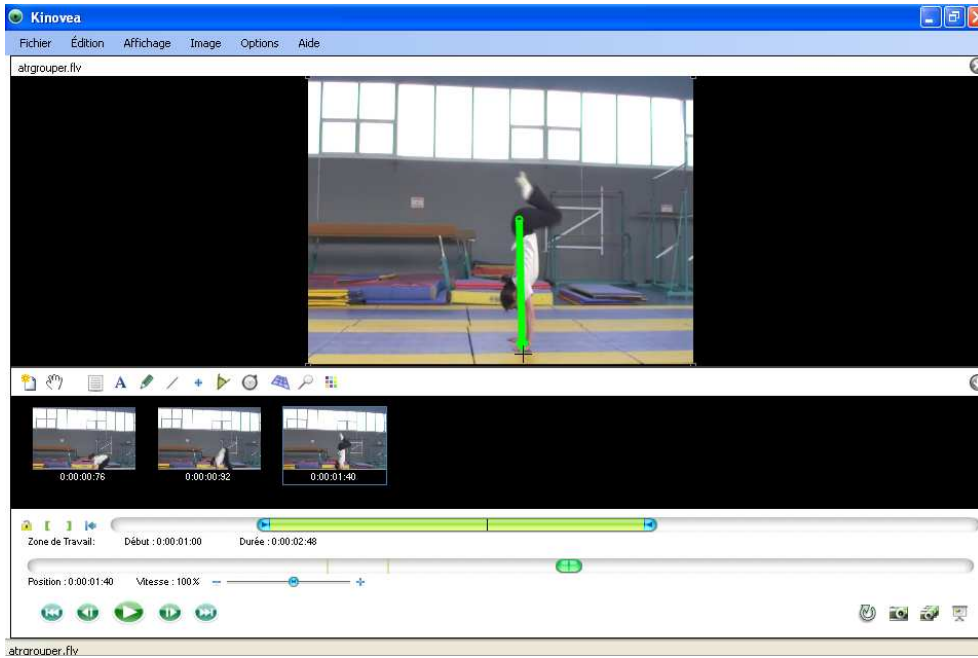
Position : 0:00:00:32 Vitesse : 100%

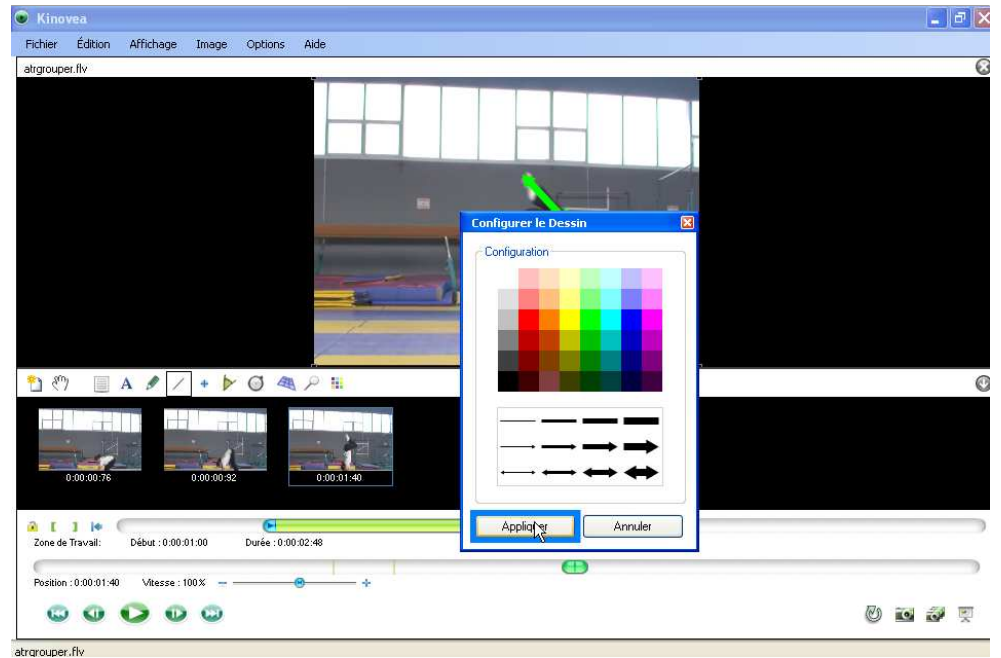
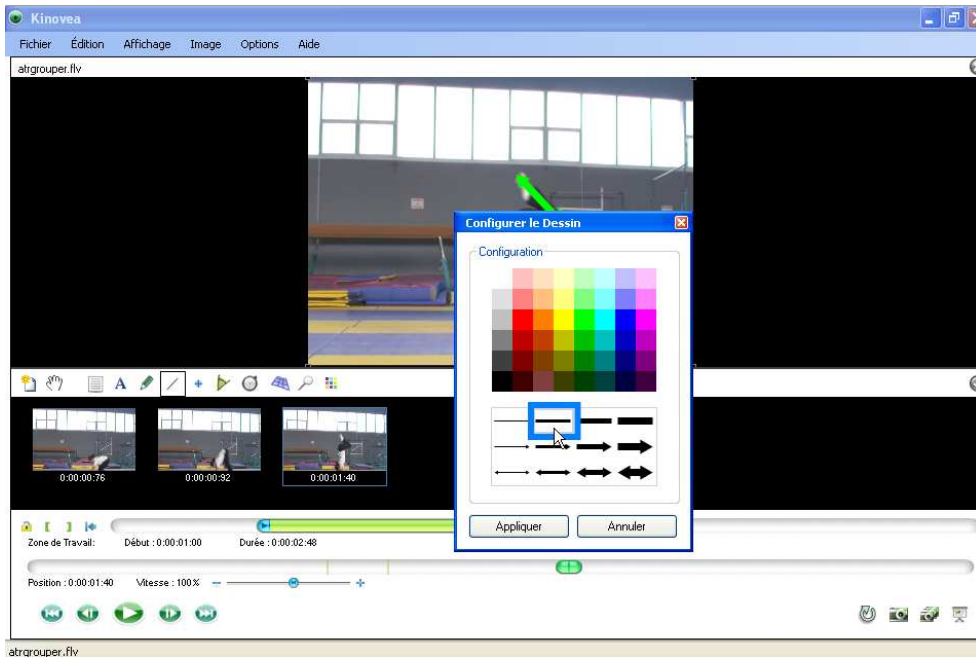
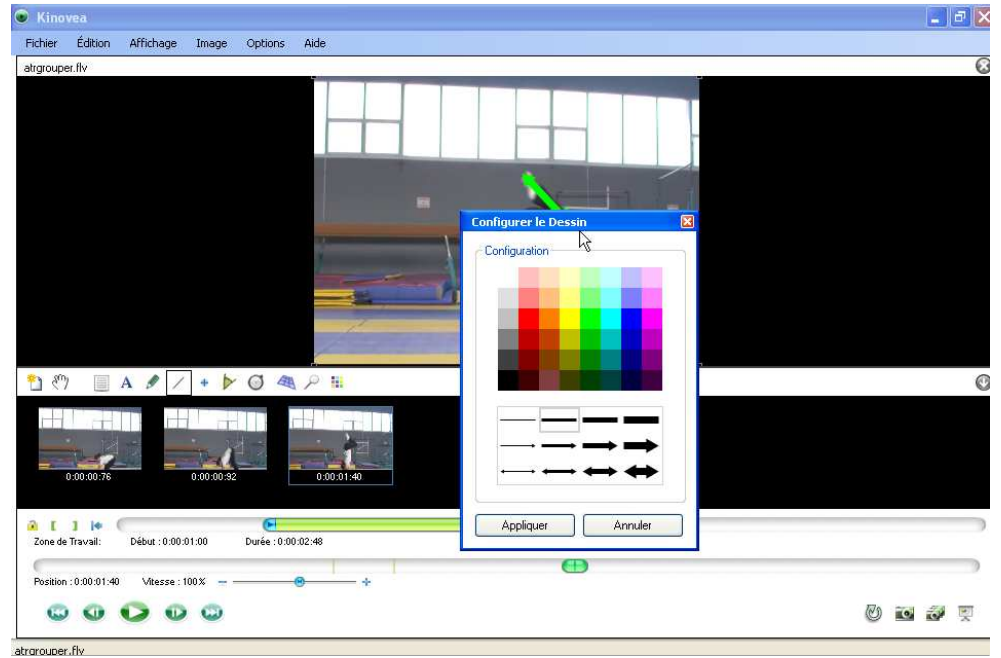
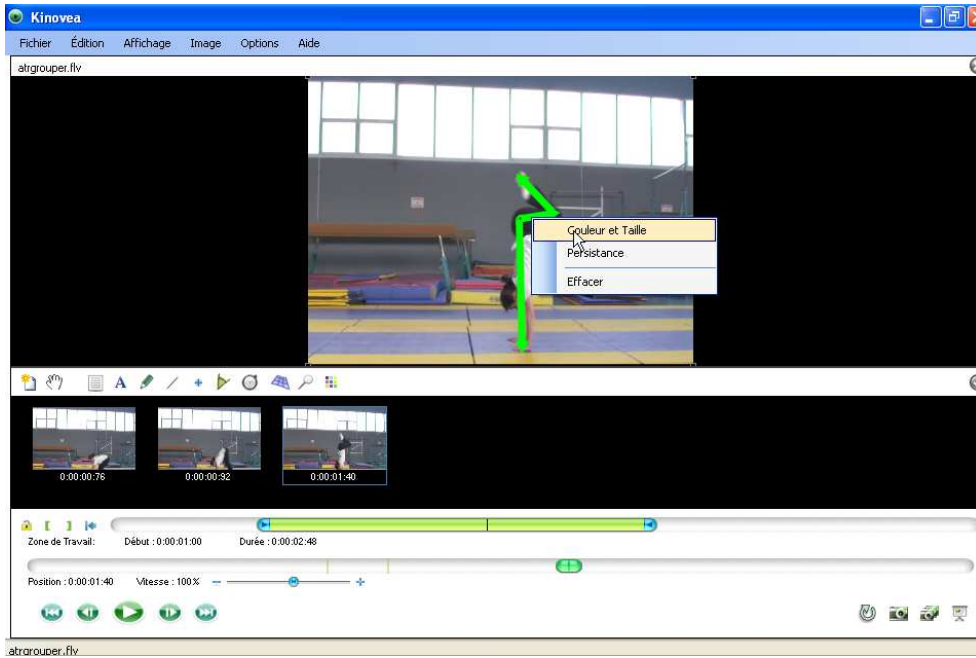
atrgrouper.flv

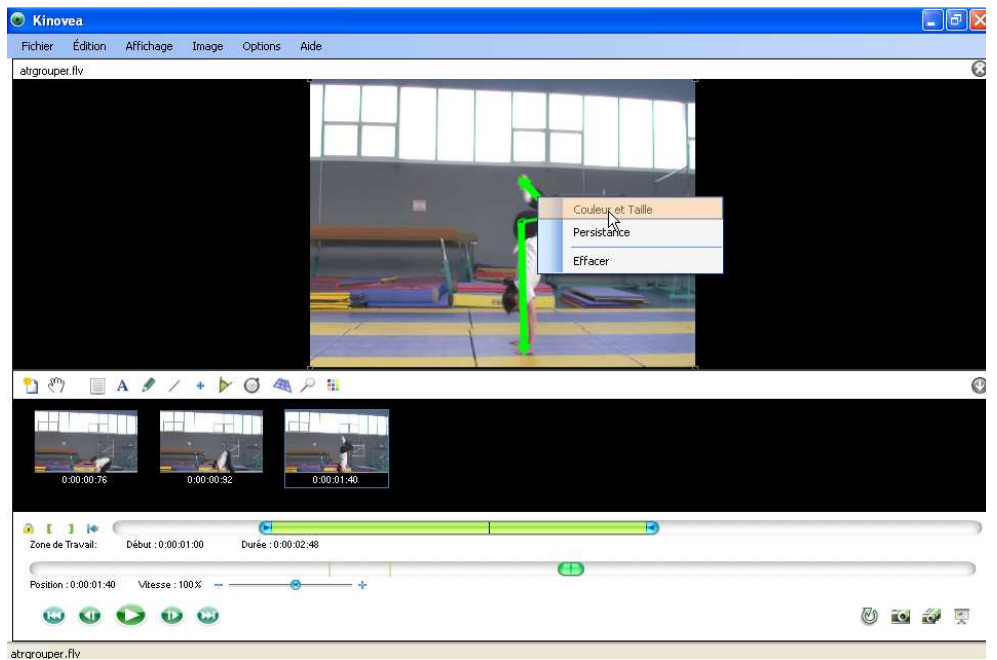
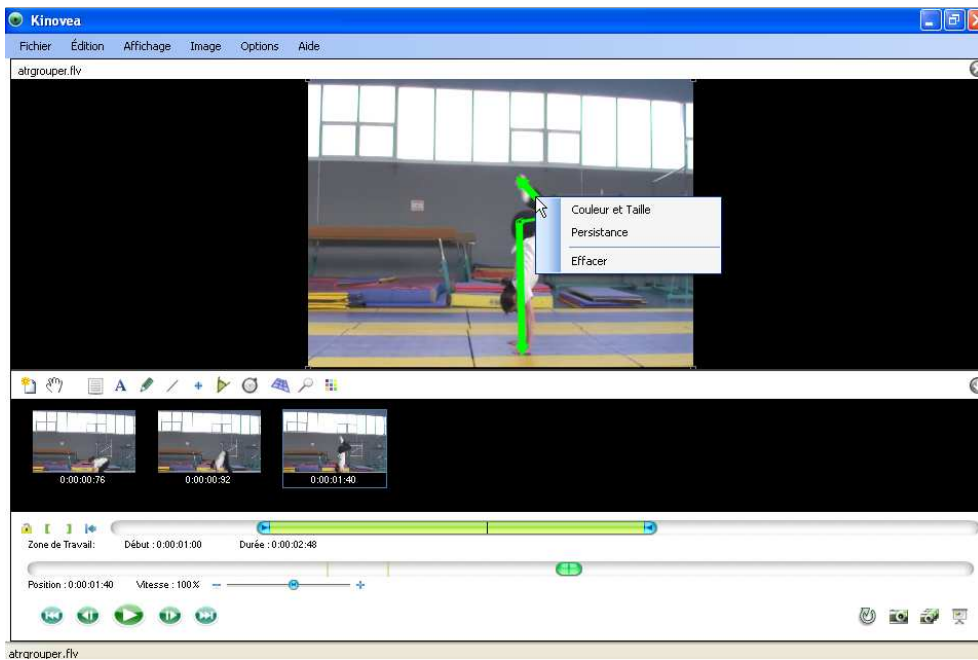
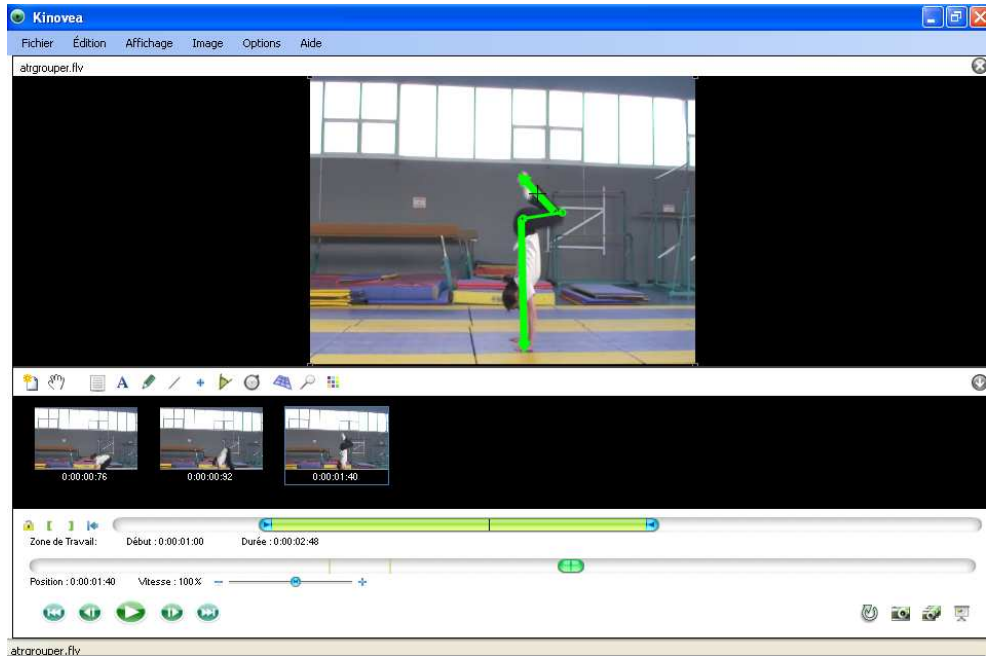
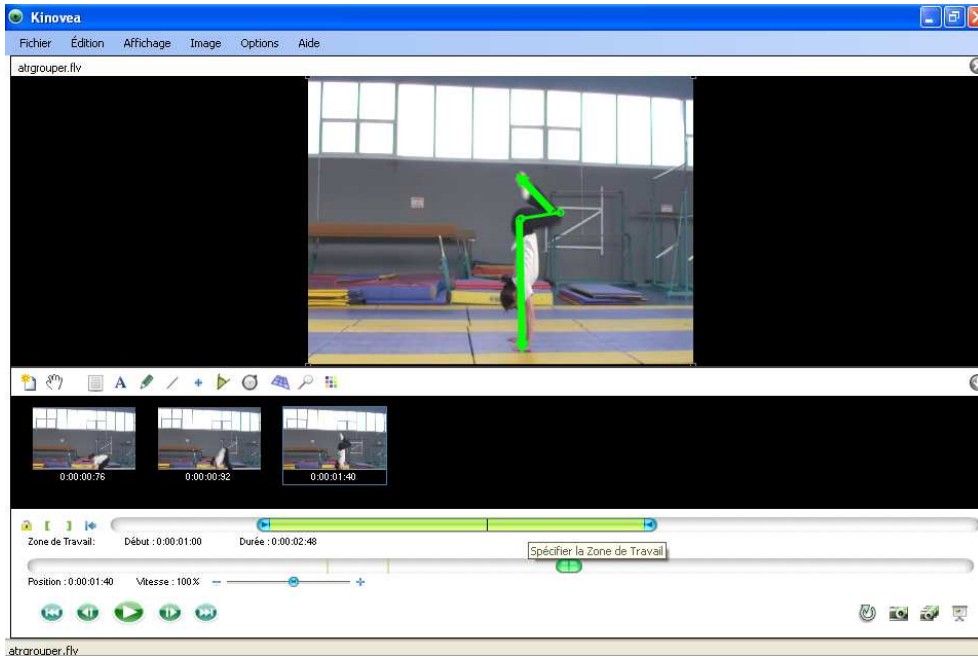


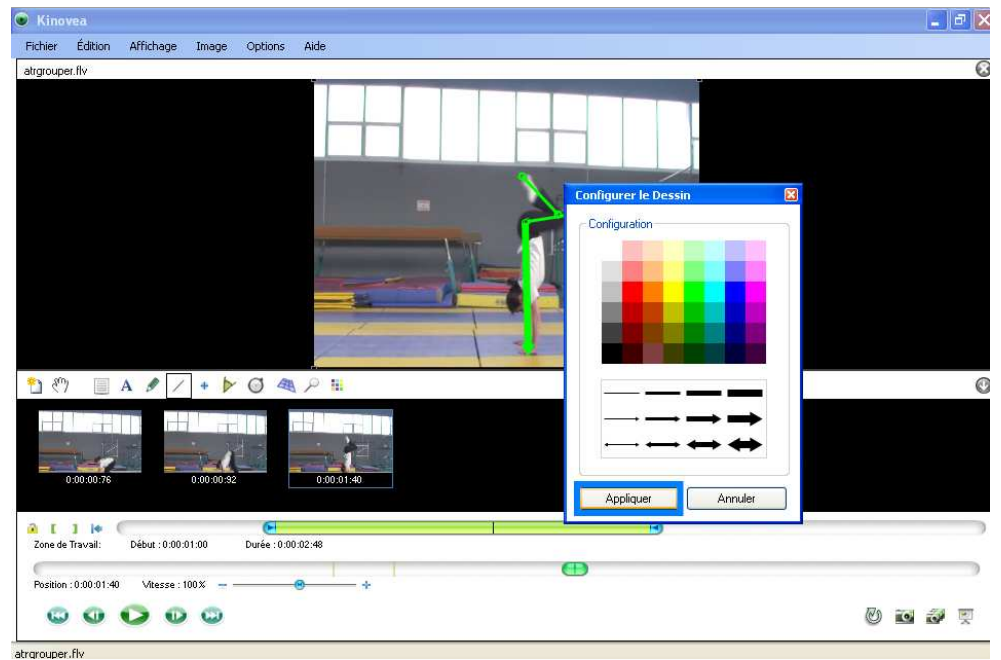
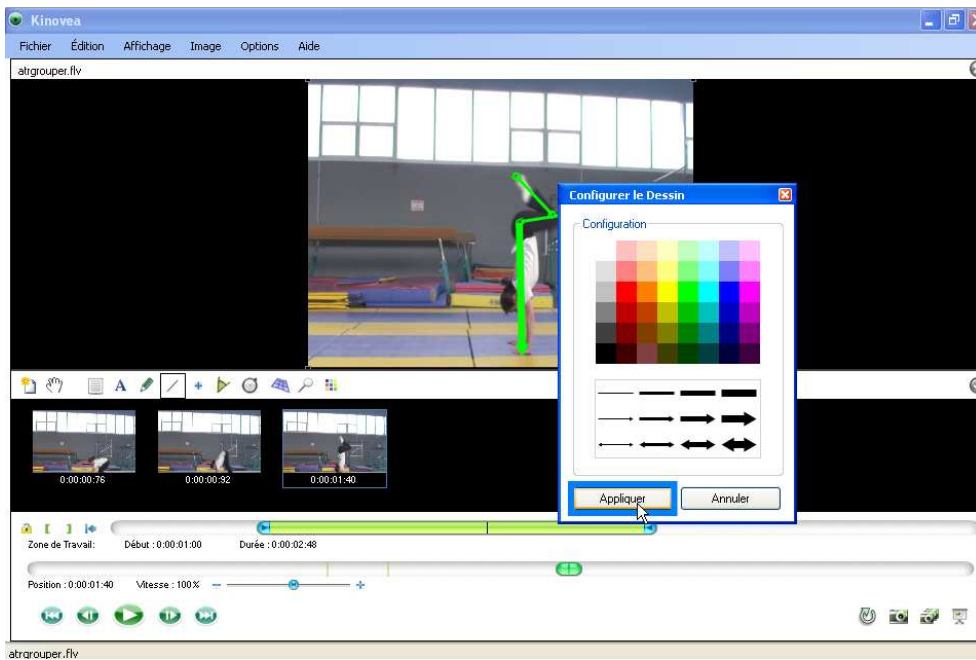
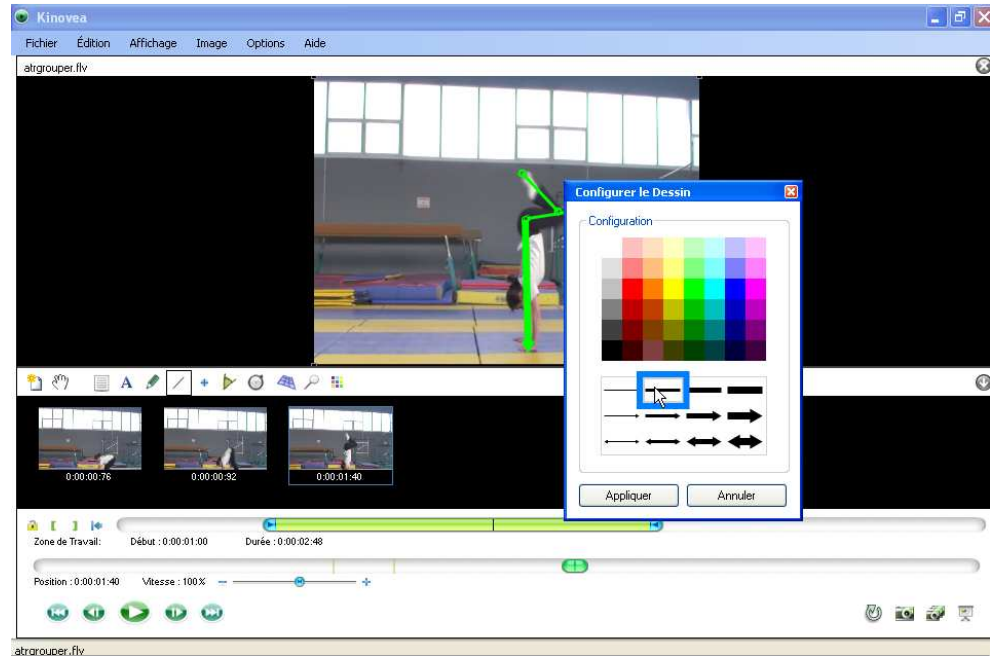
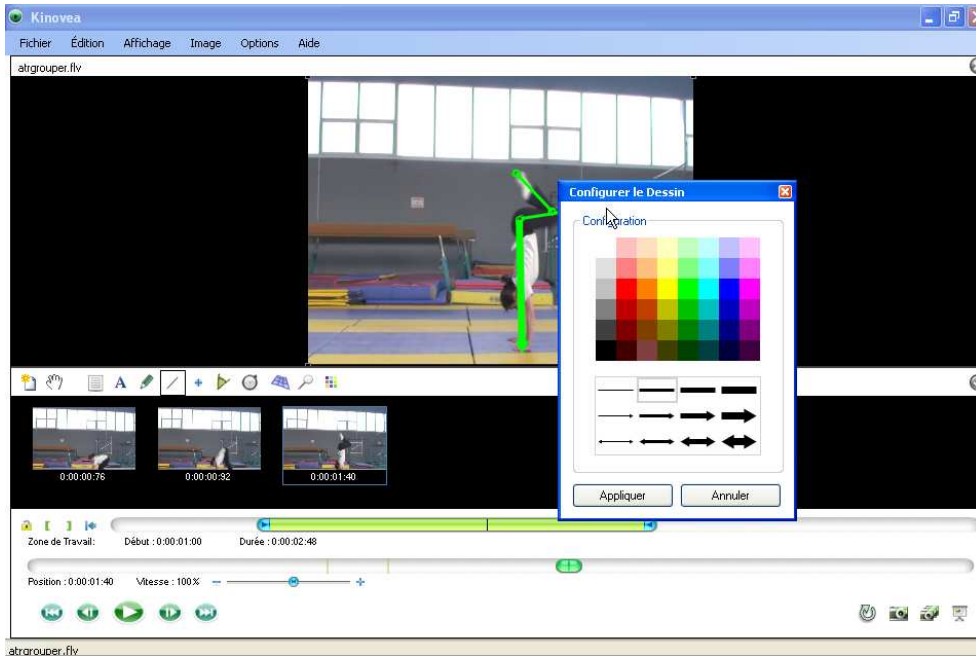


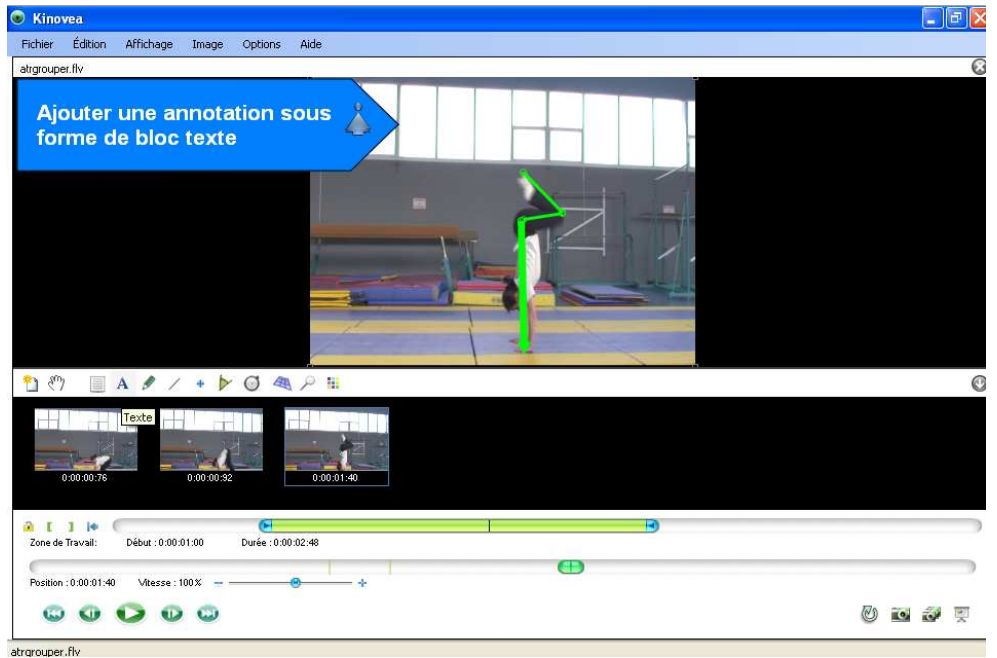
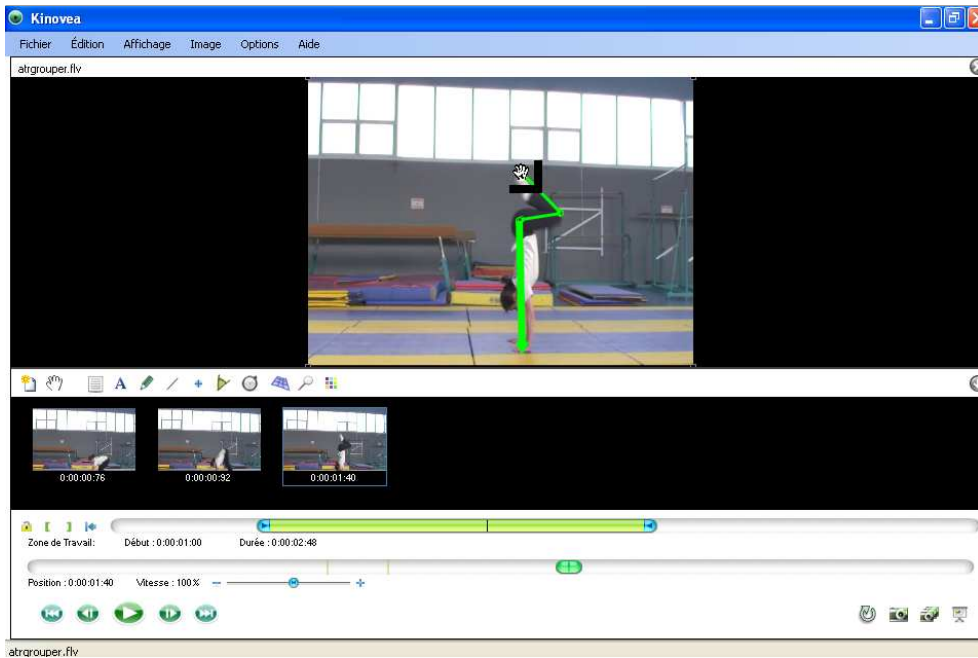
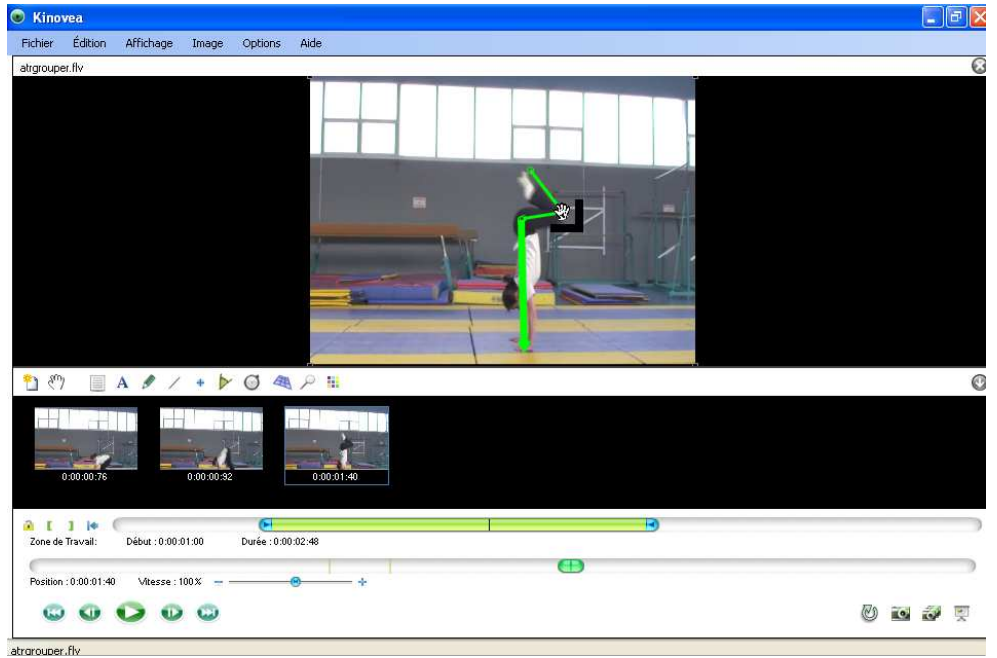
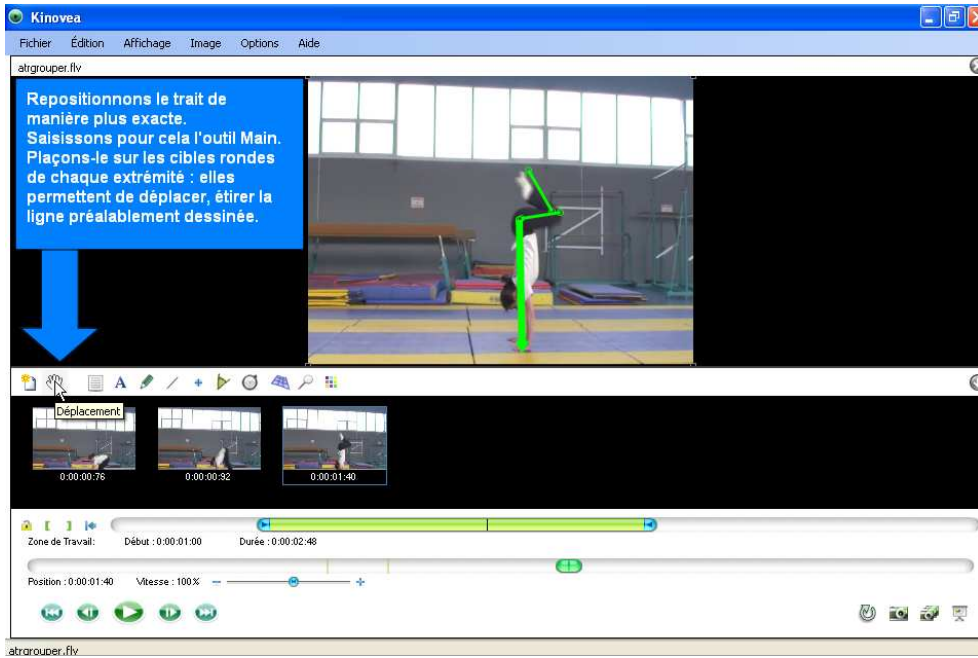


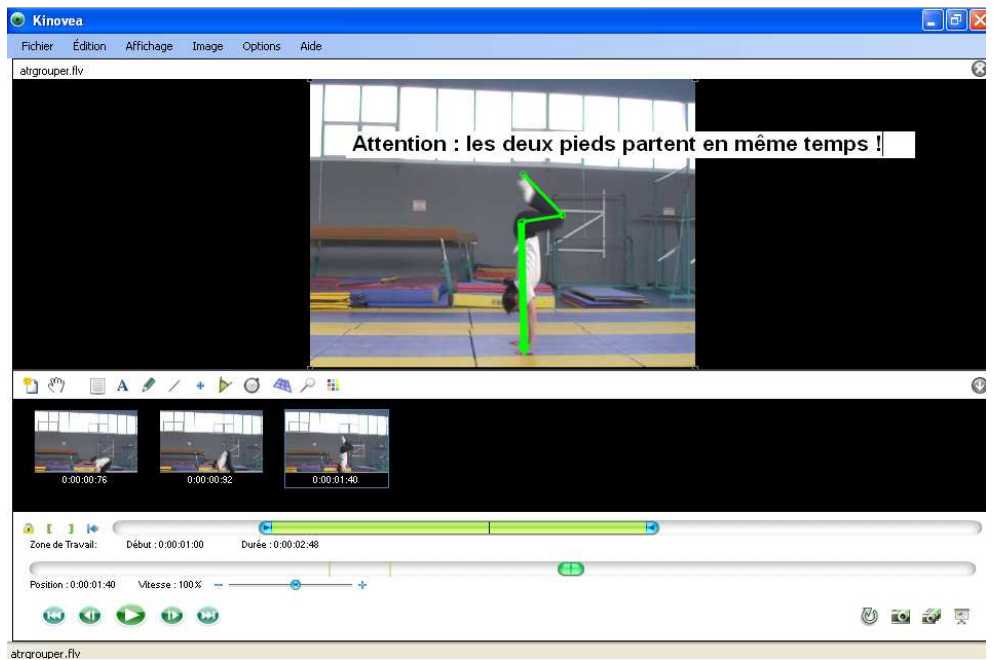
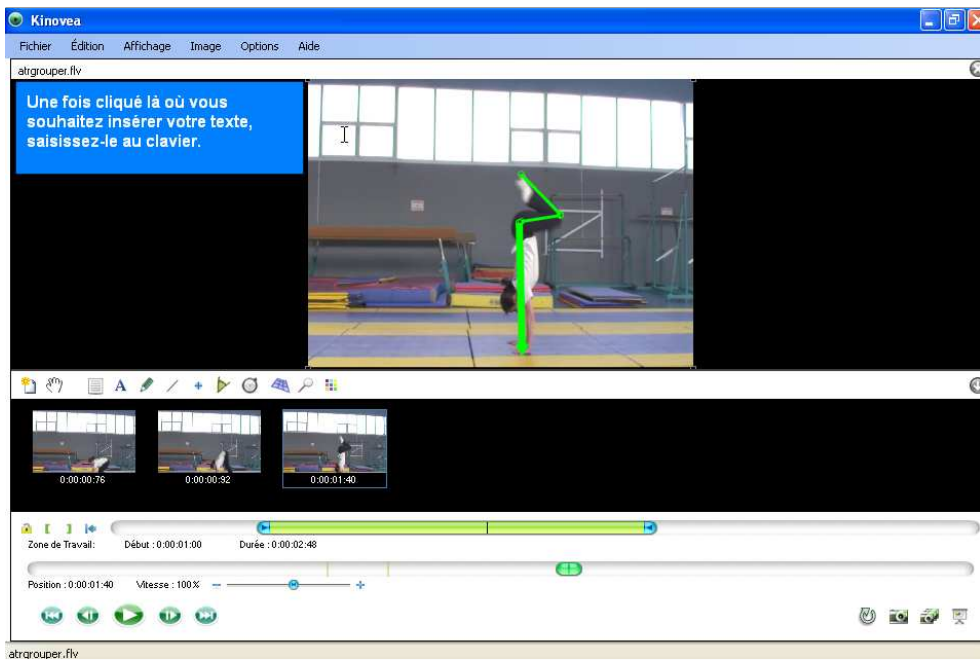
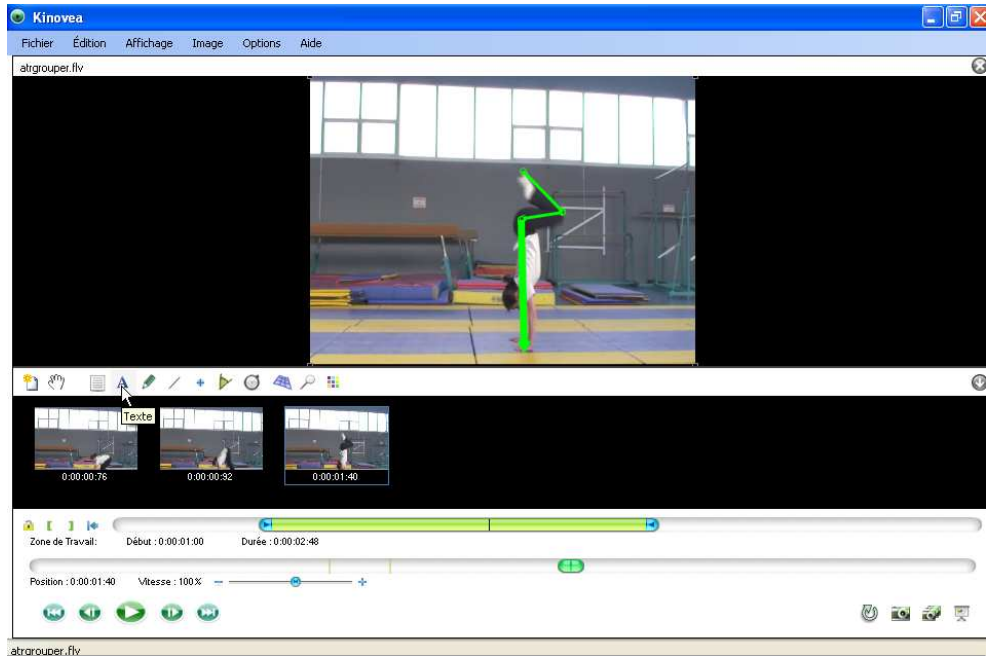
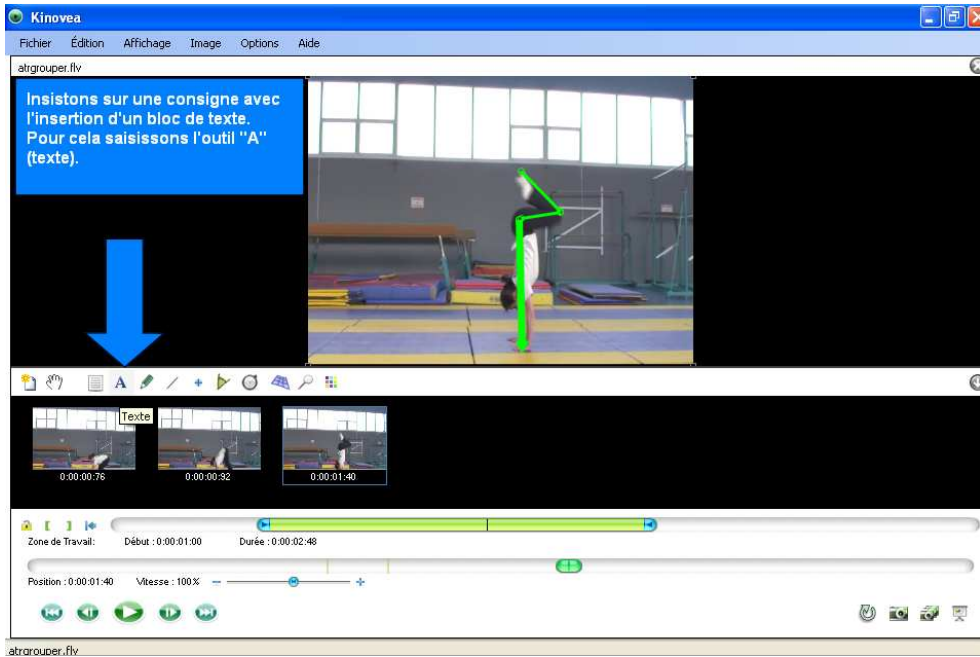


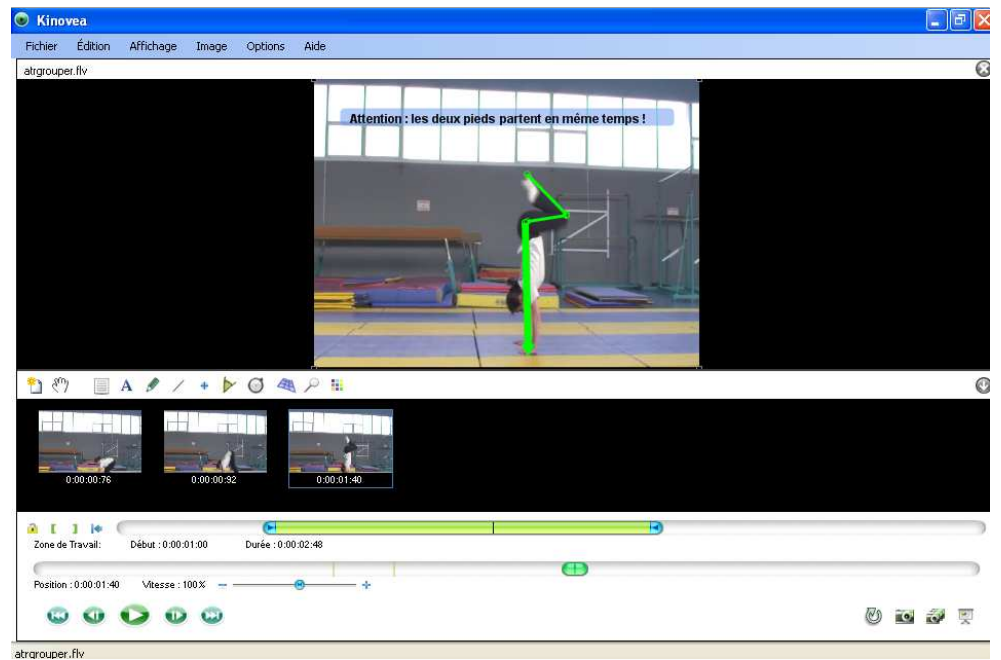
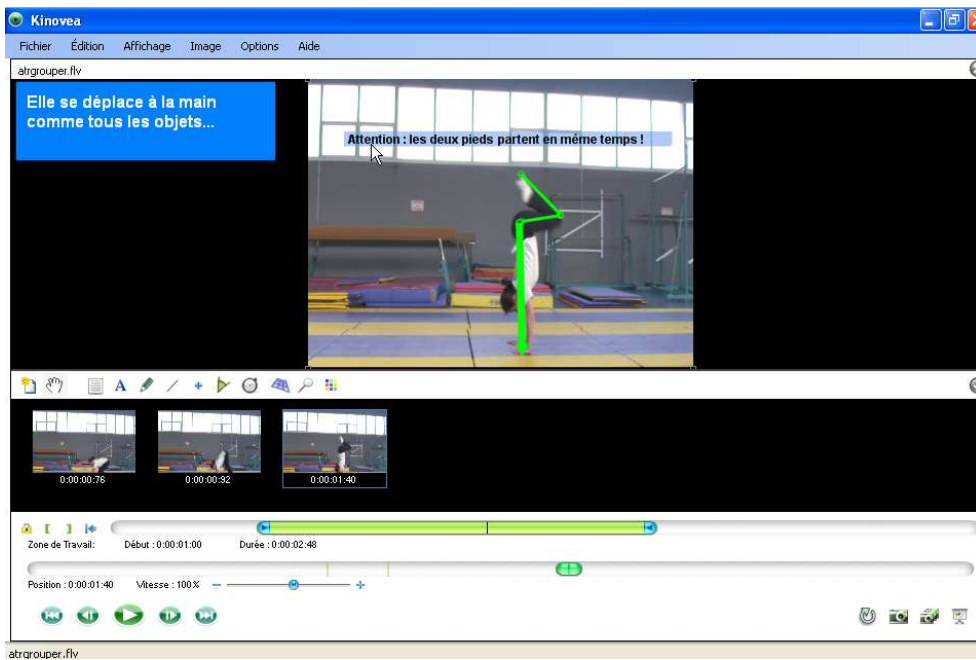
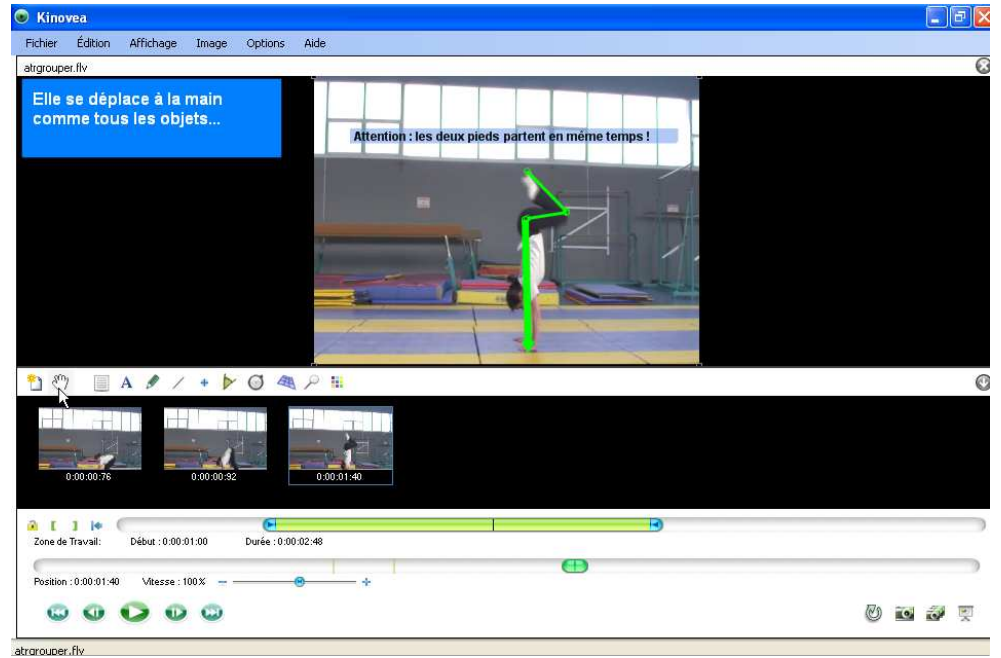
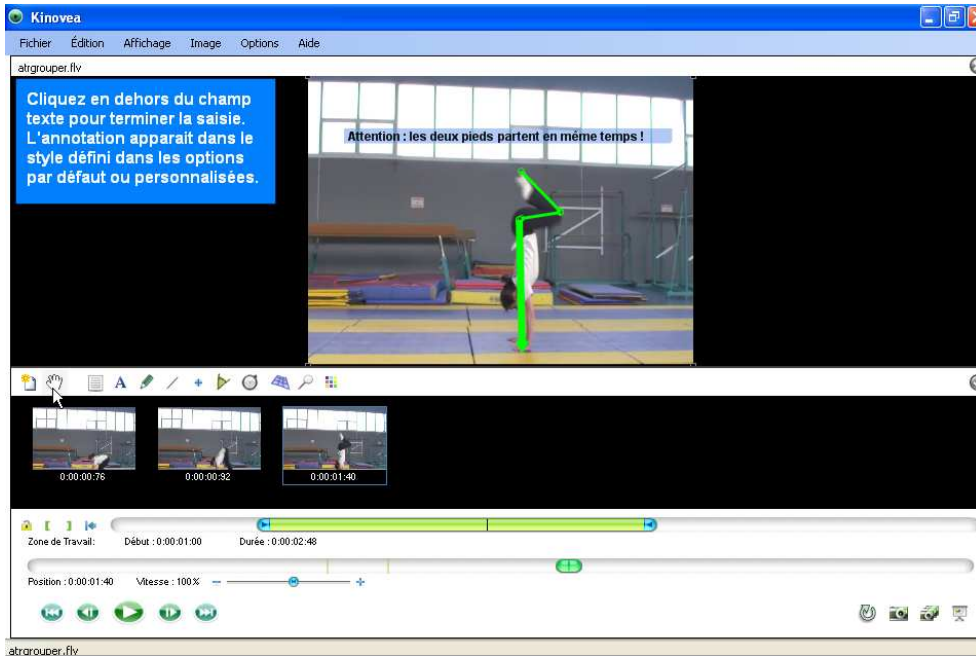


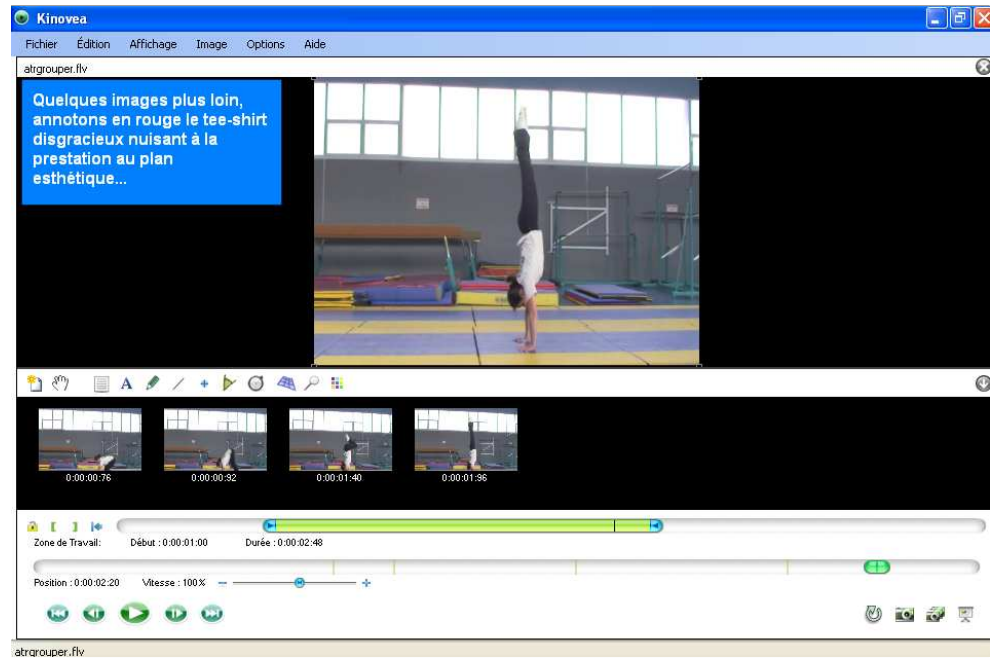
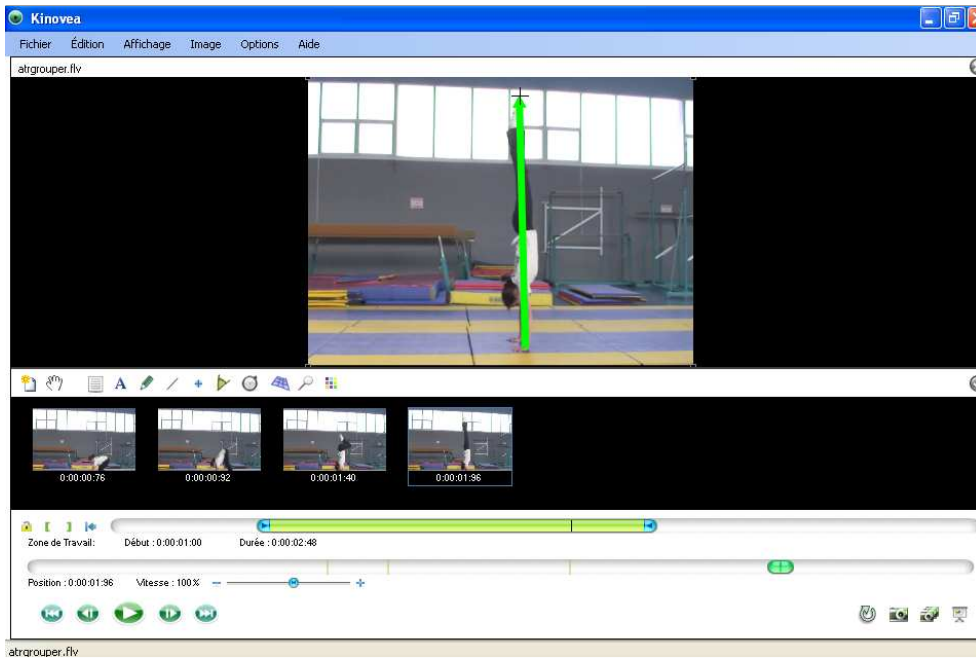
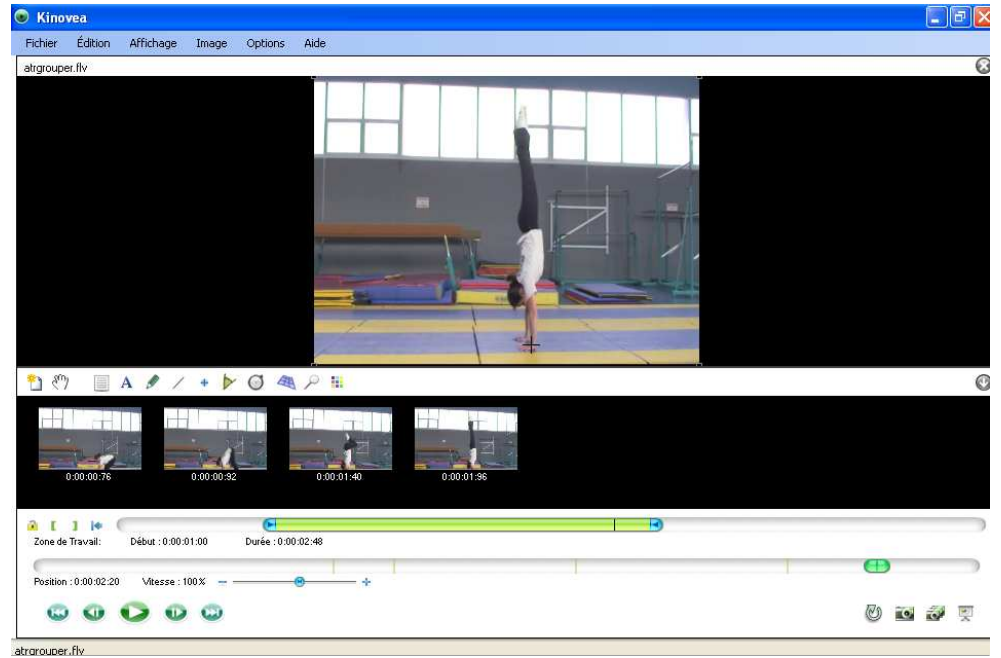
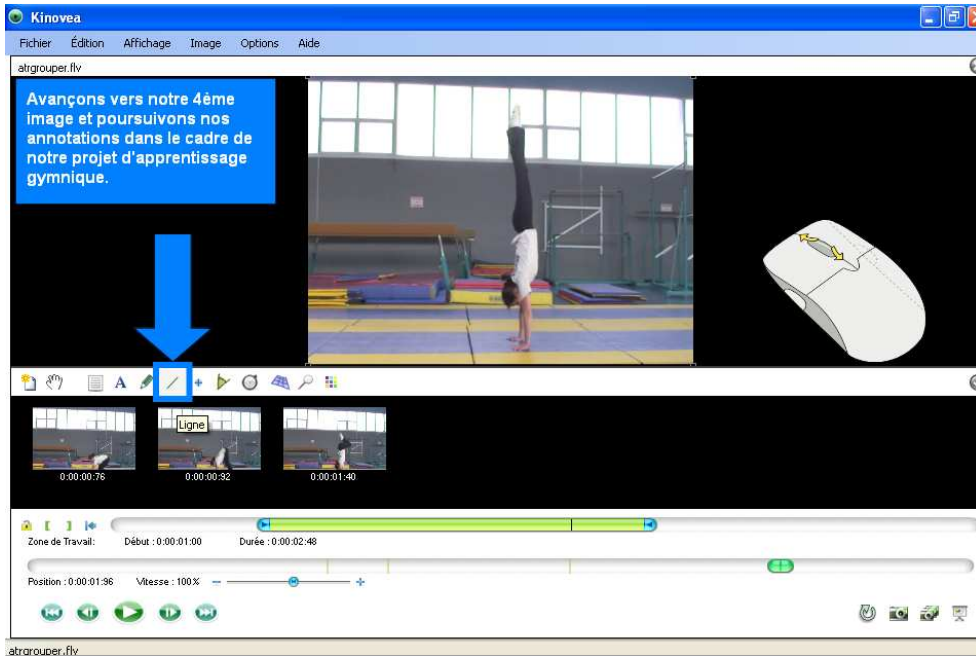


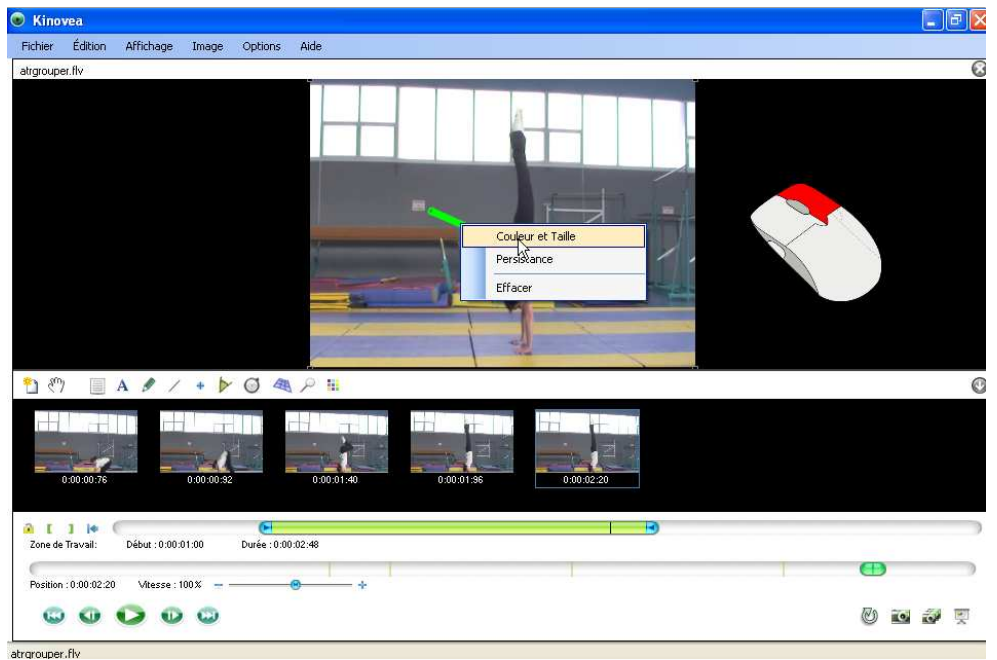
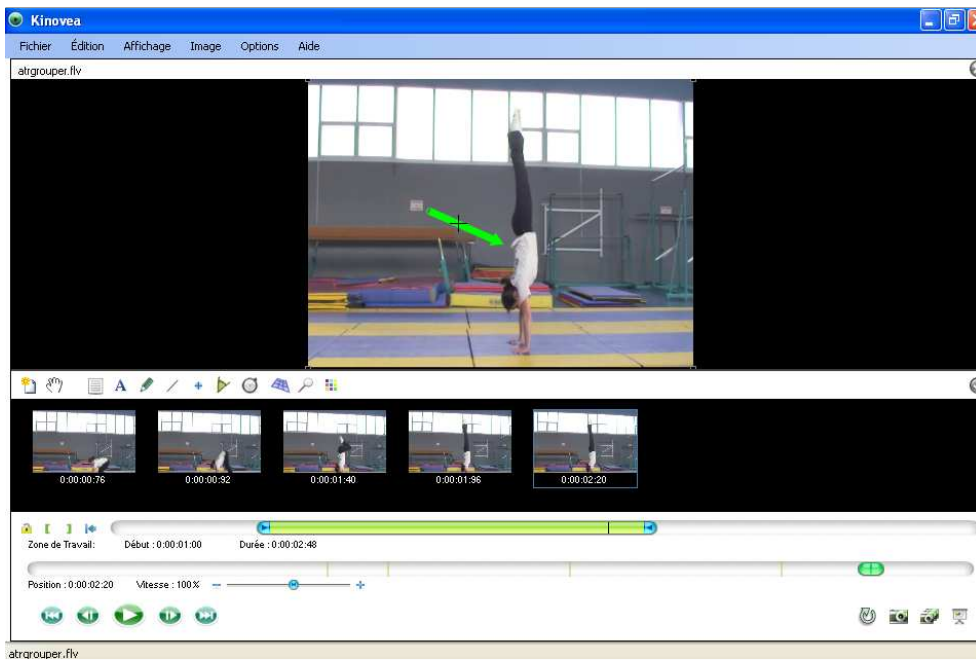
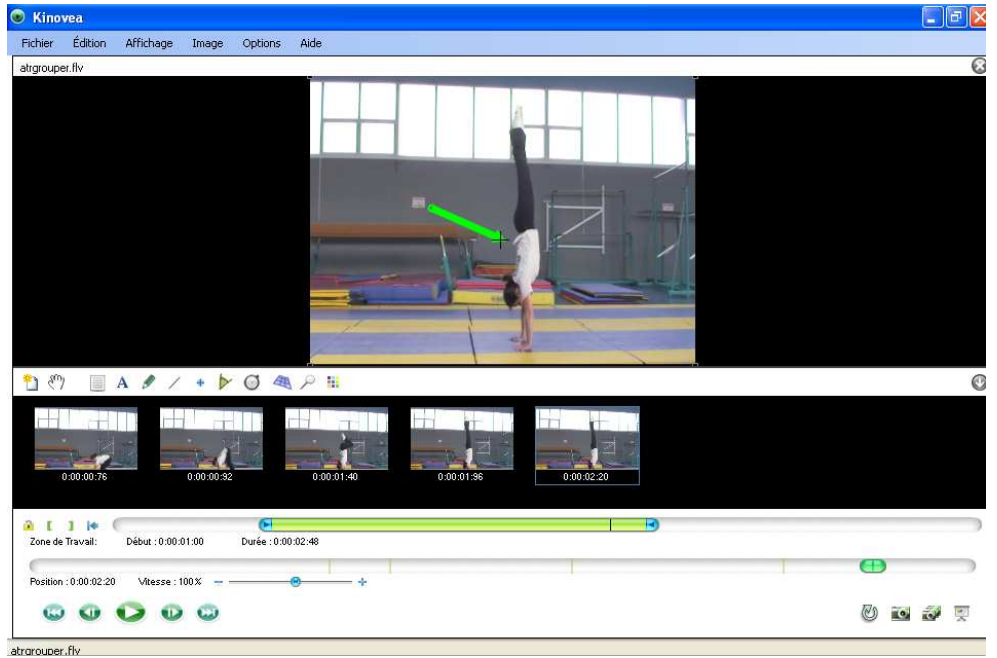
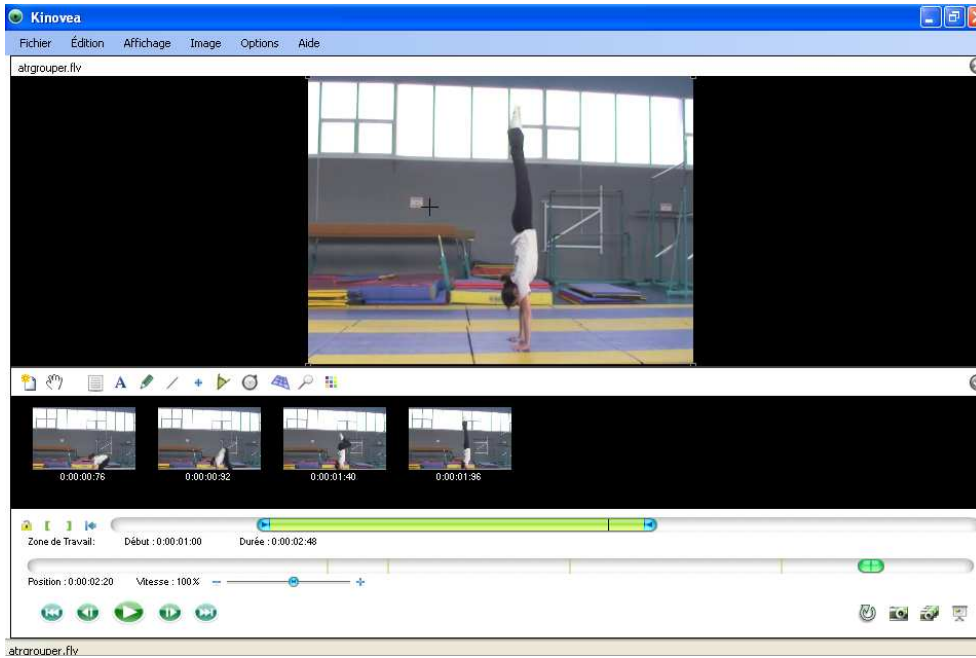


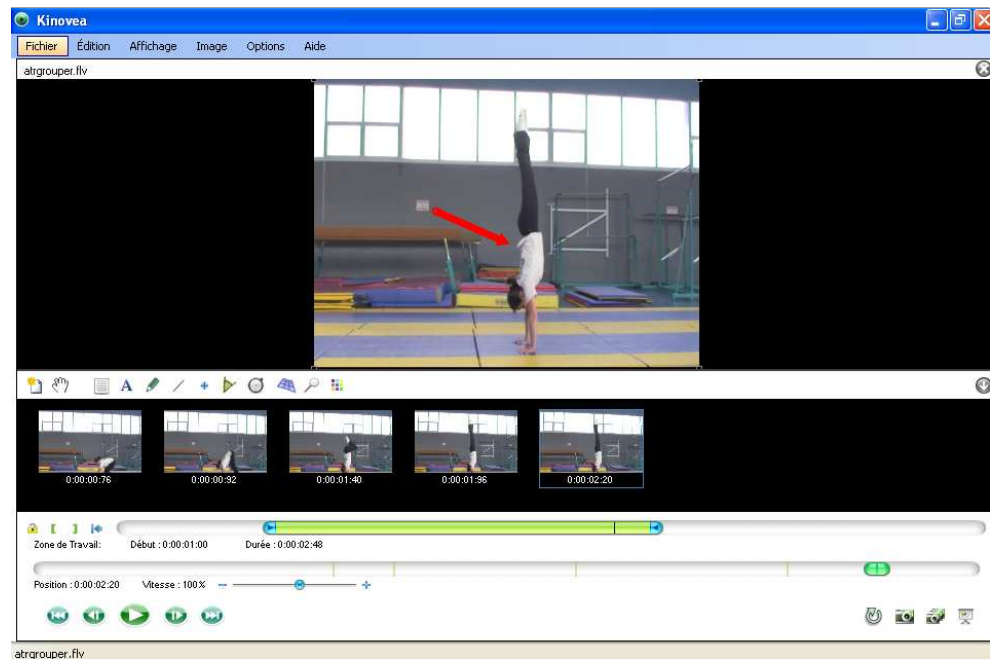
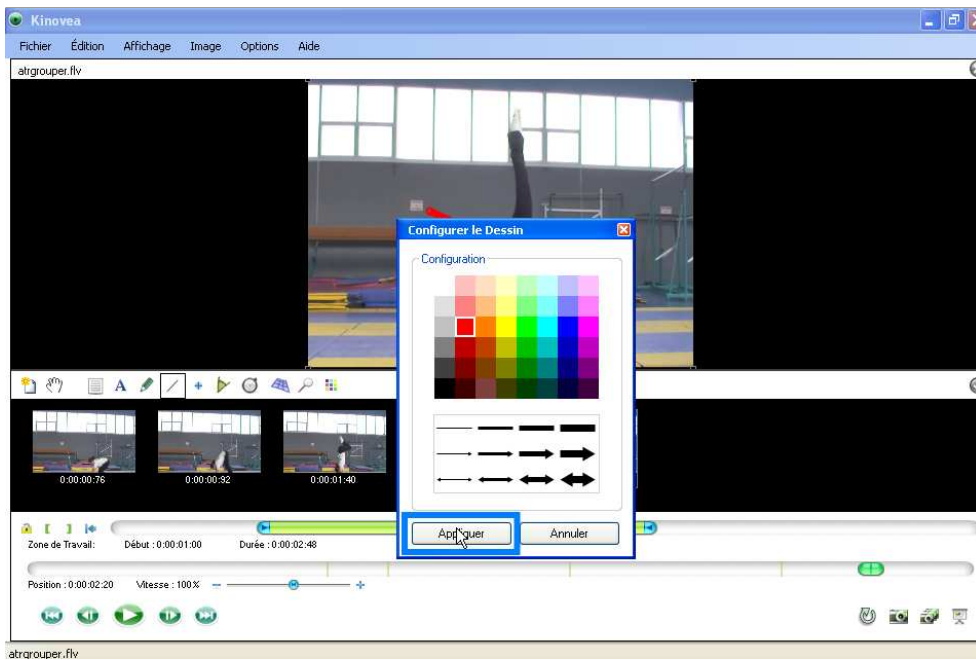
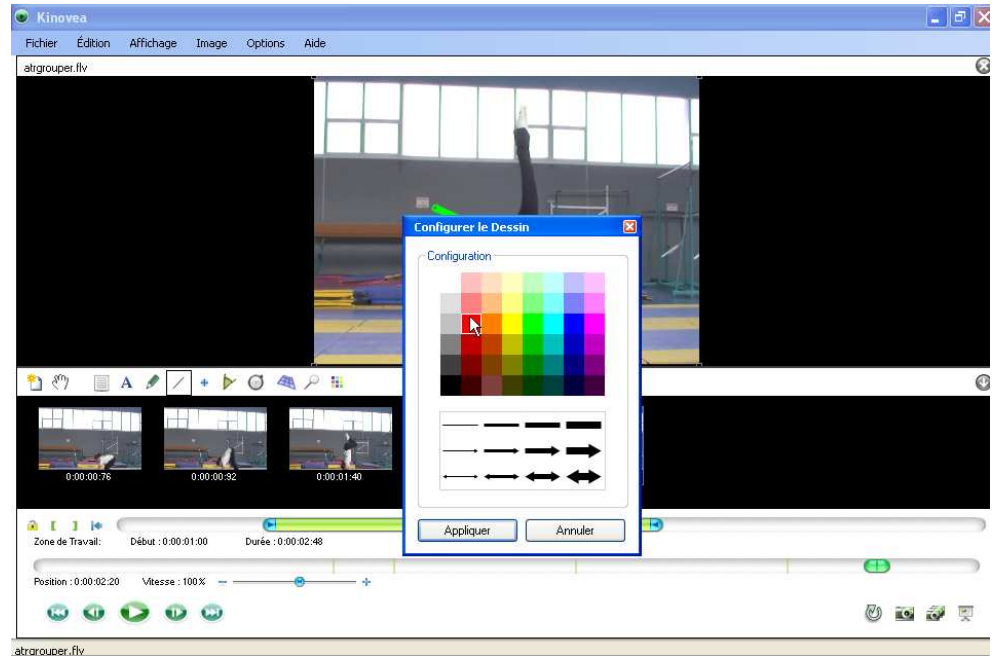
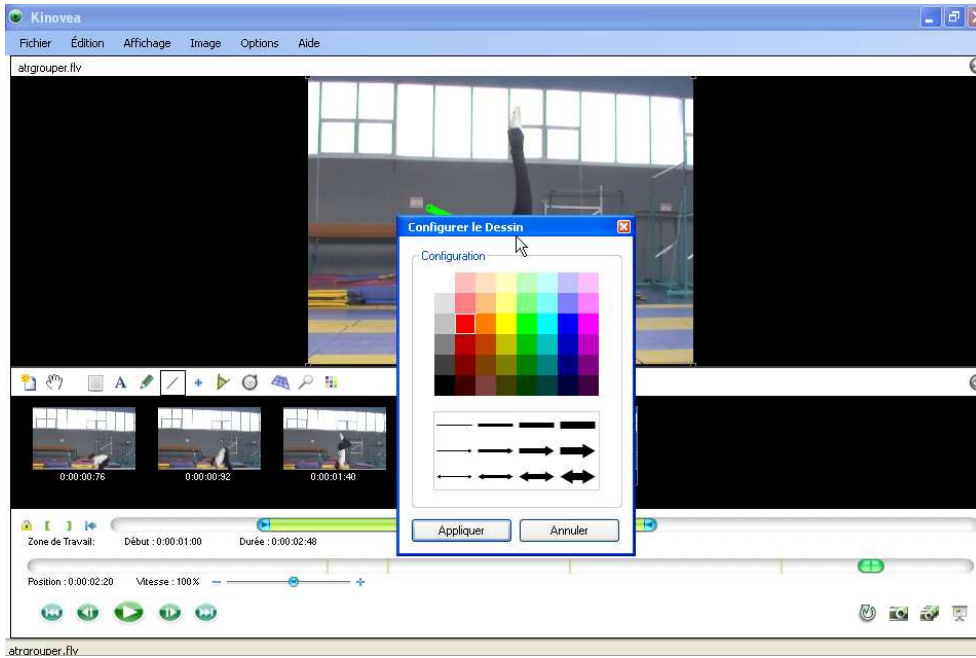


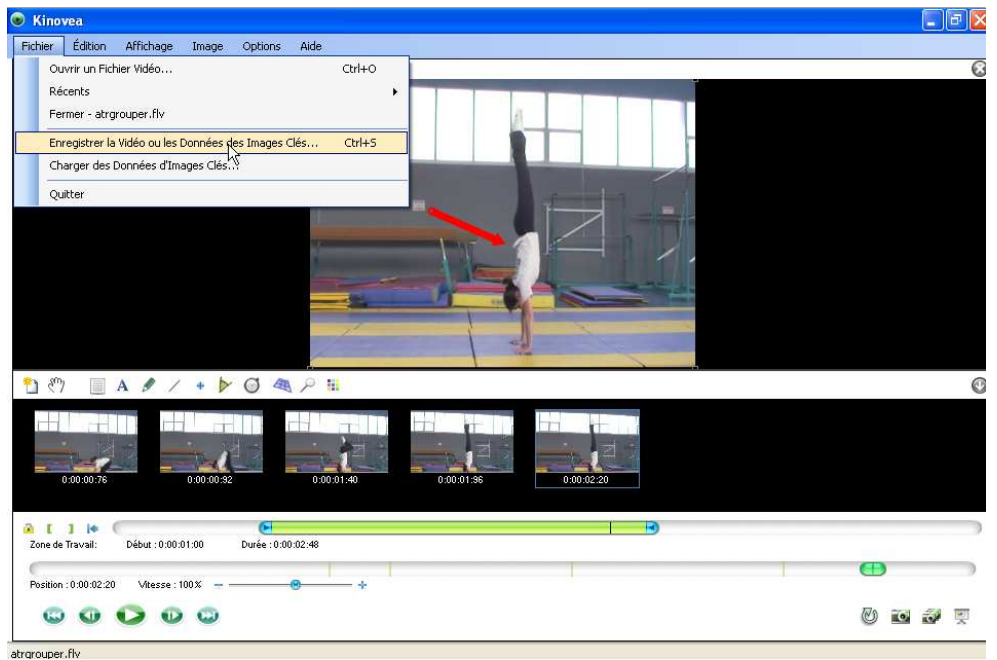
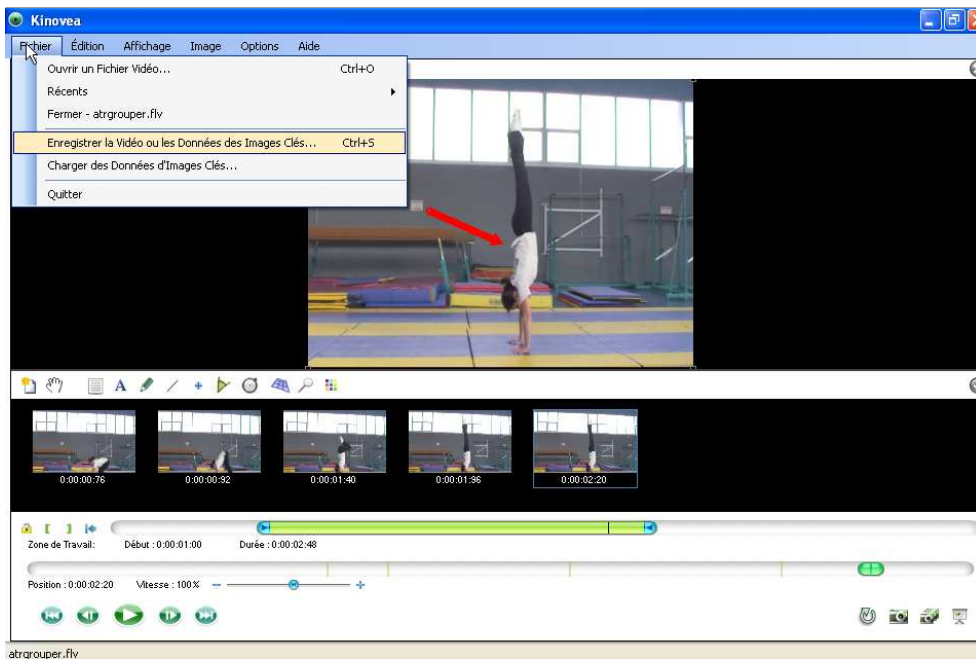
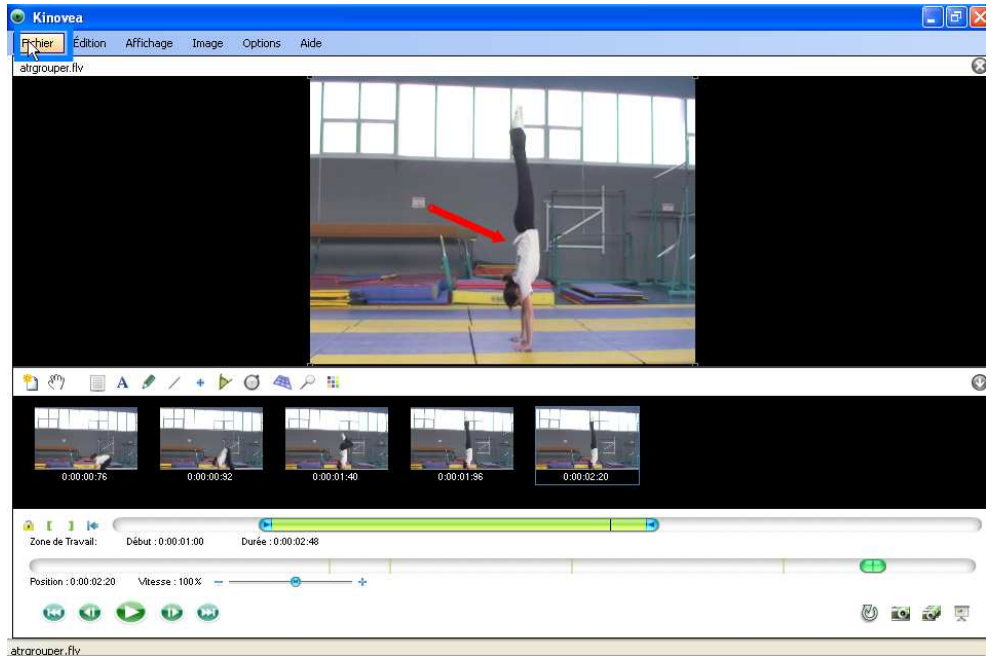
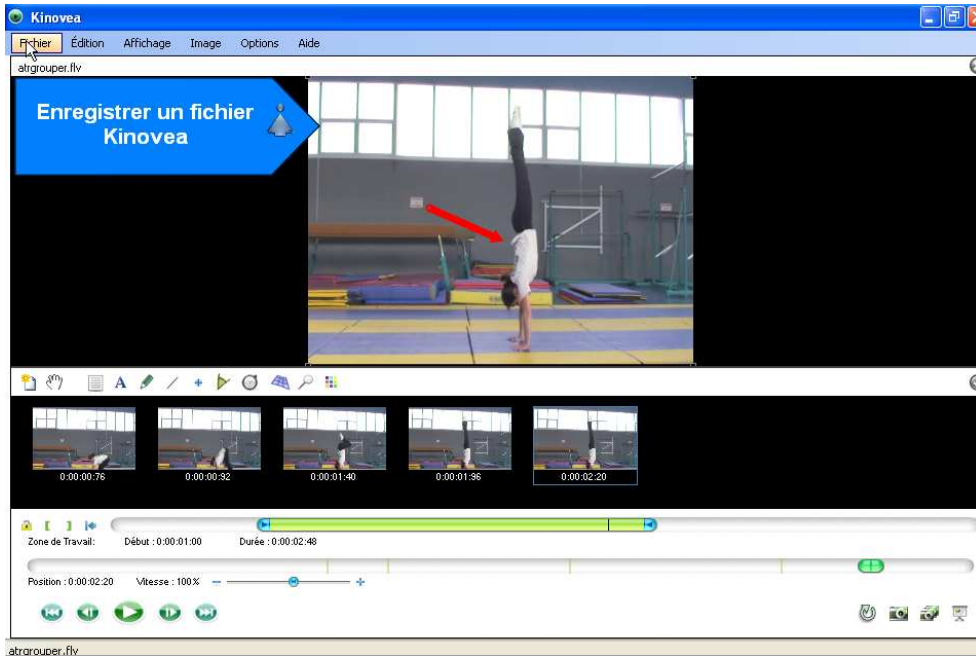


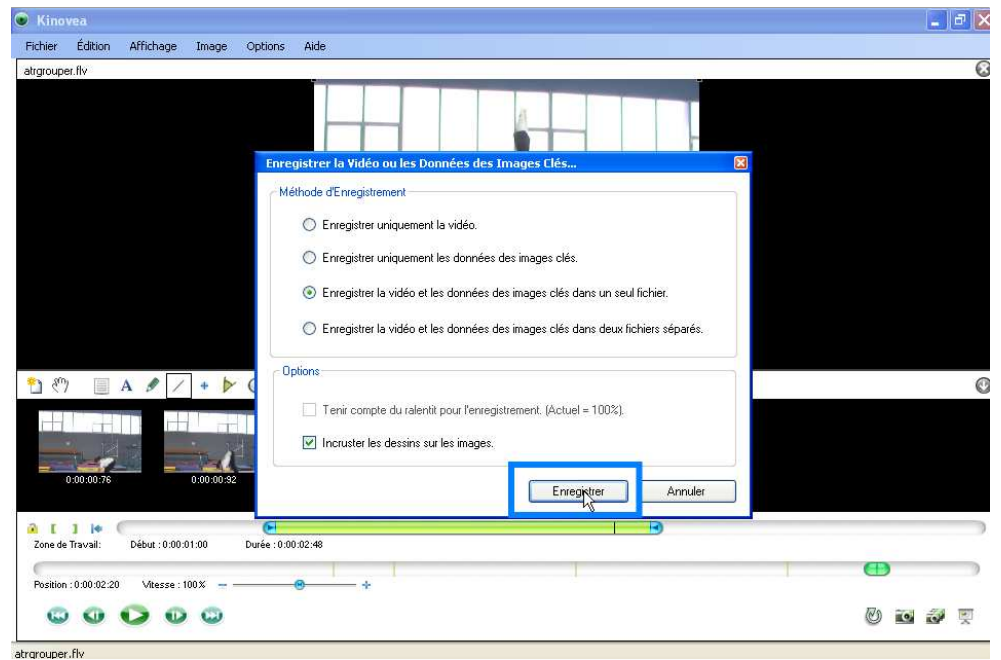
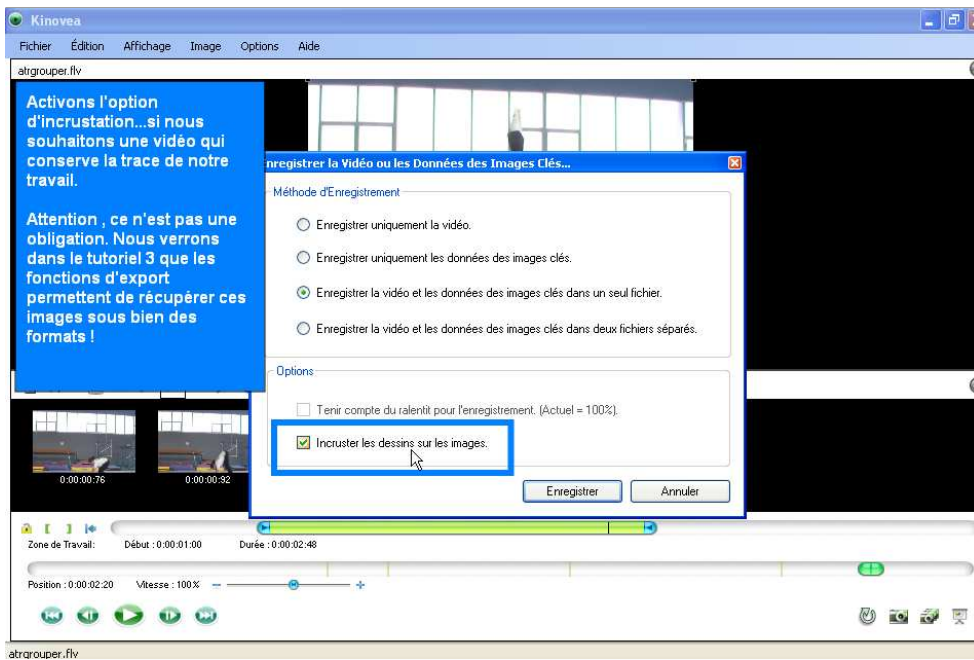
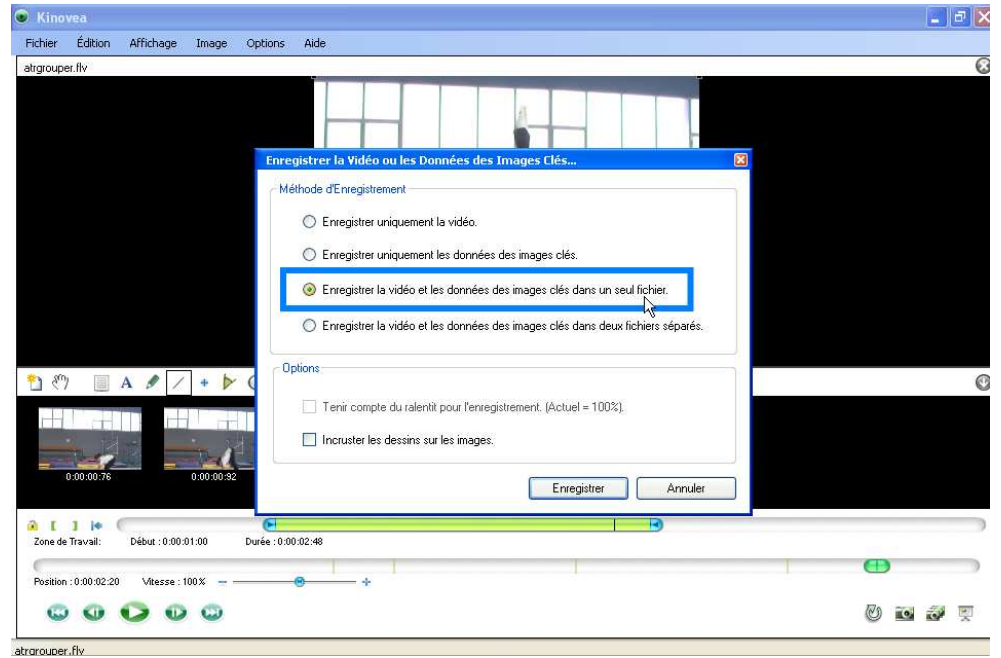
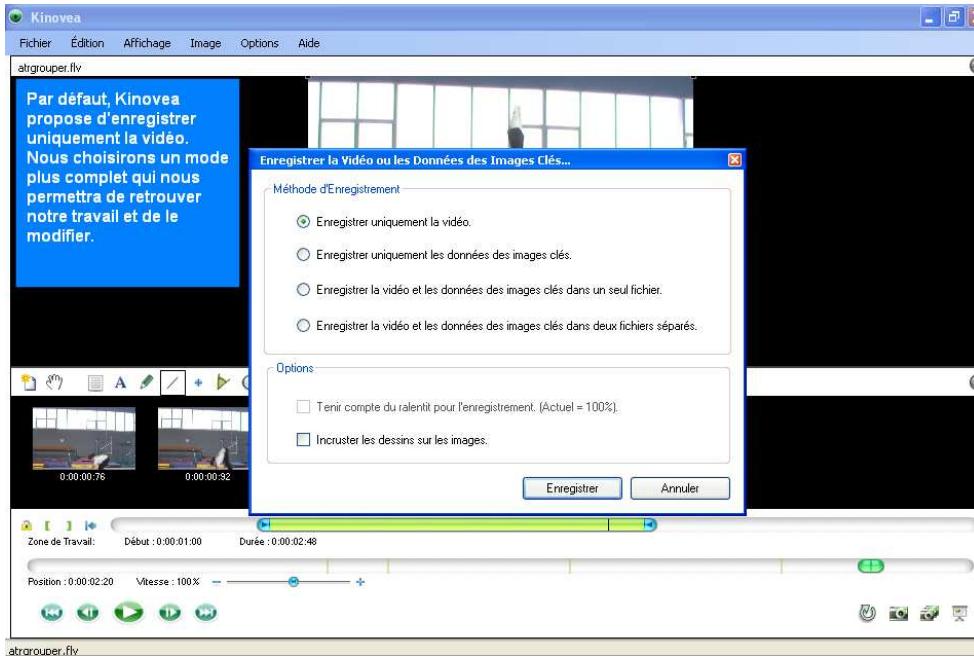


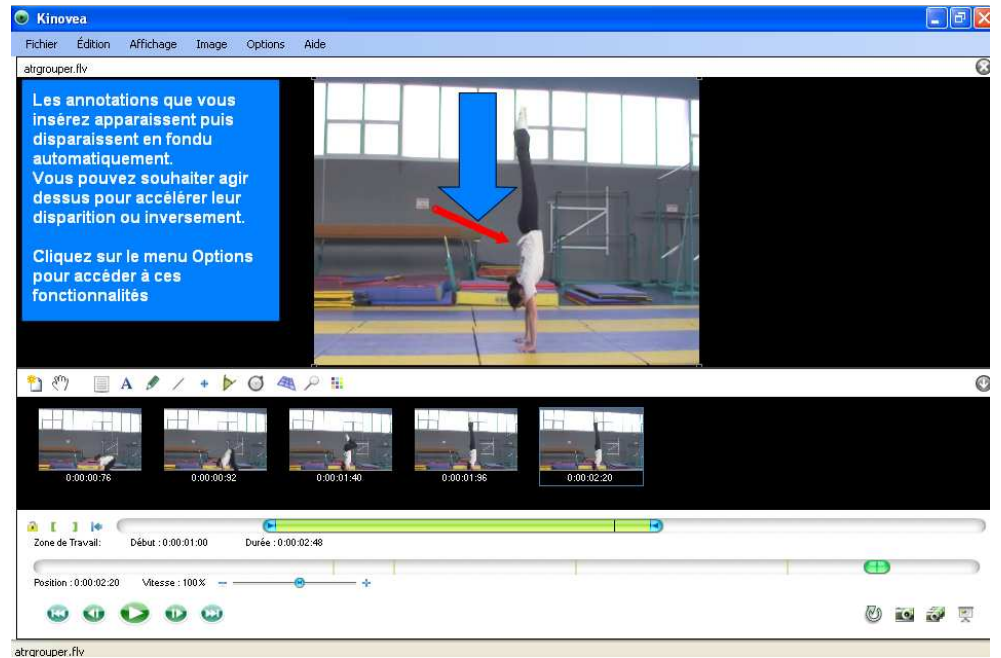
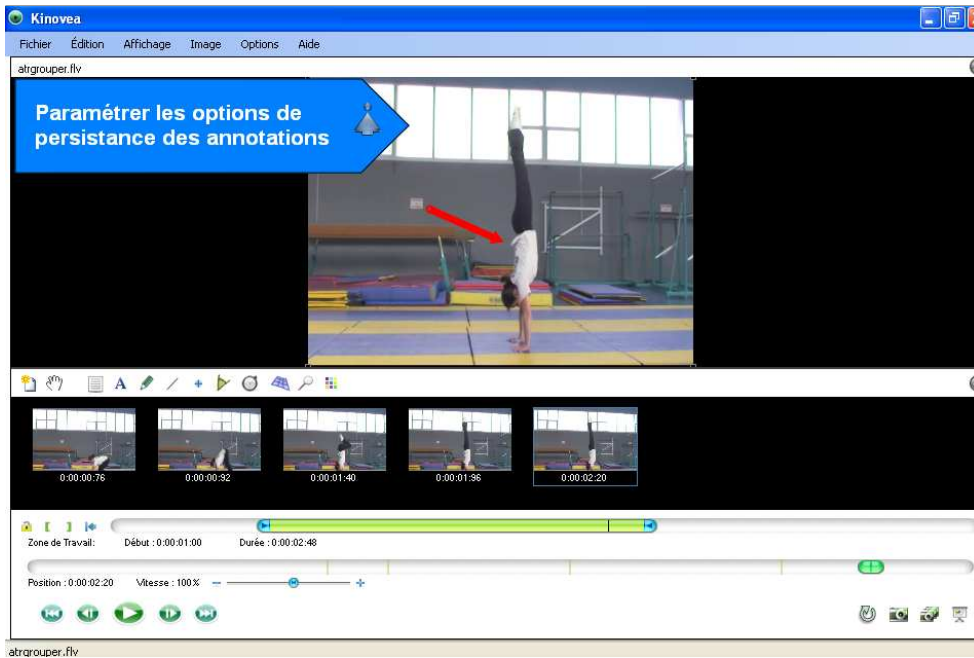
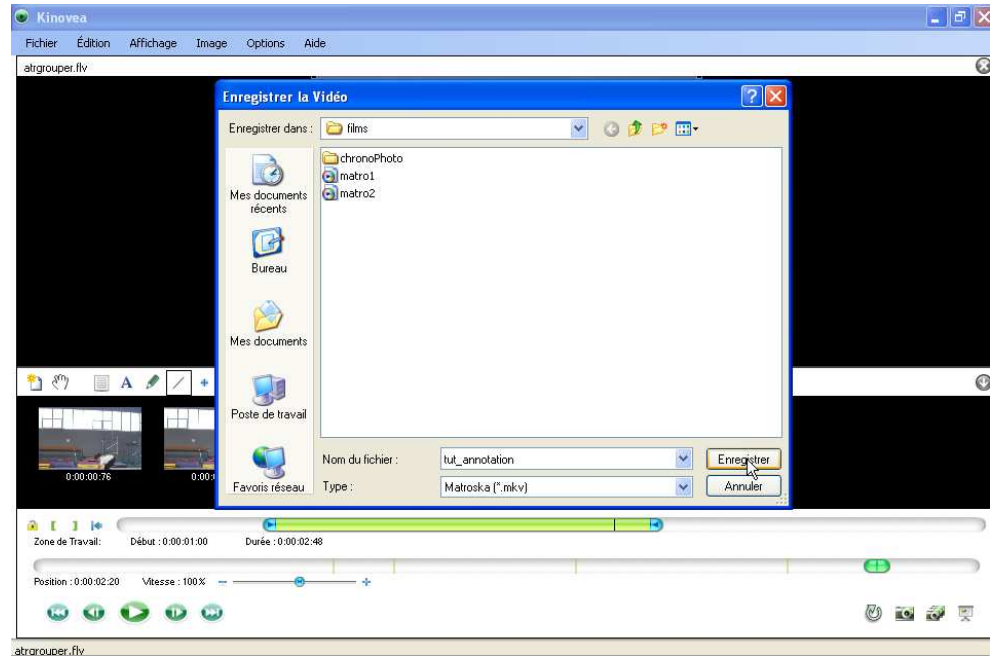
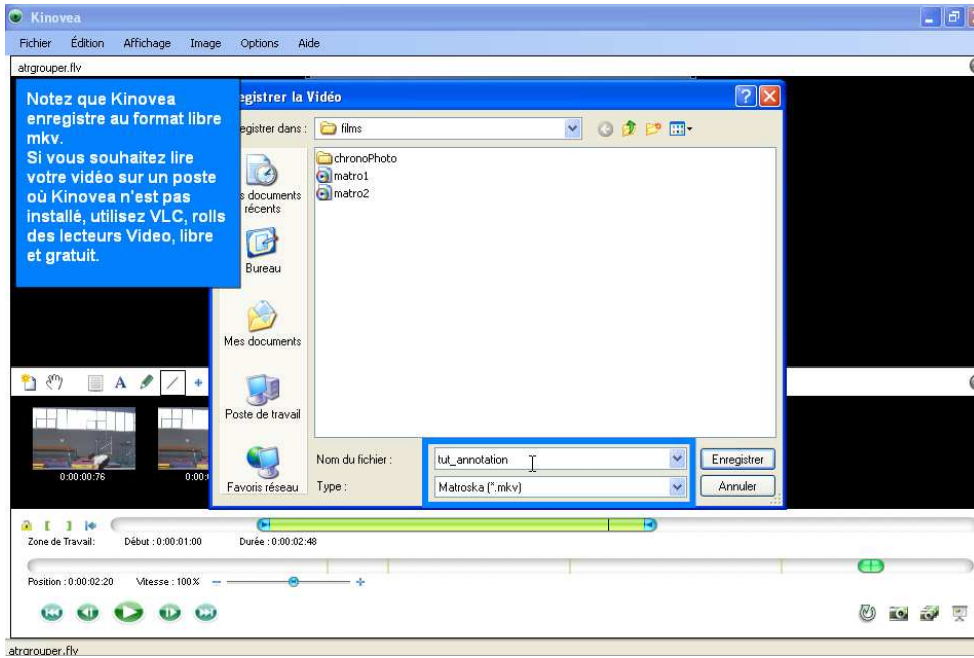


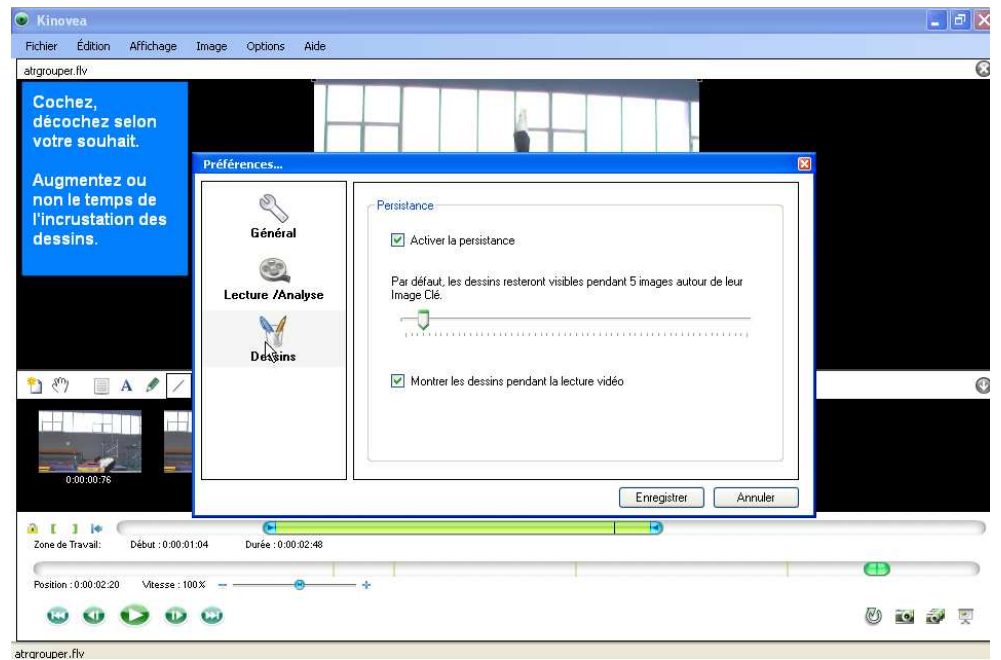
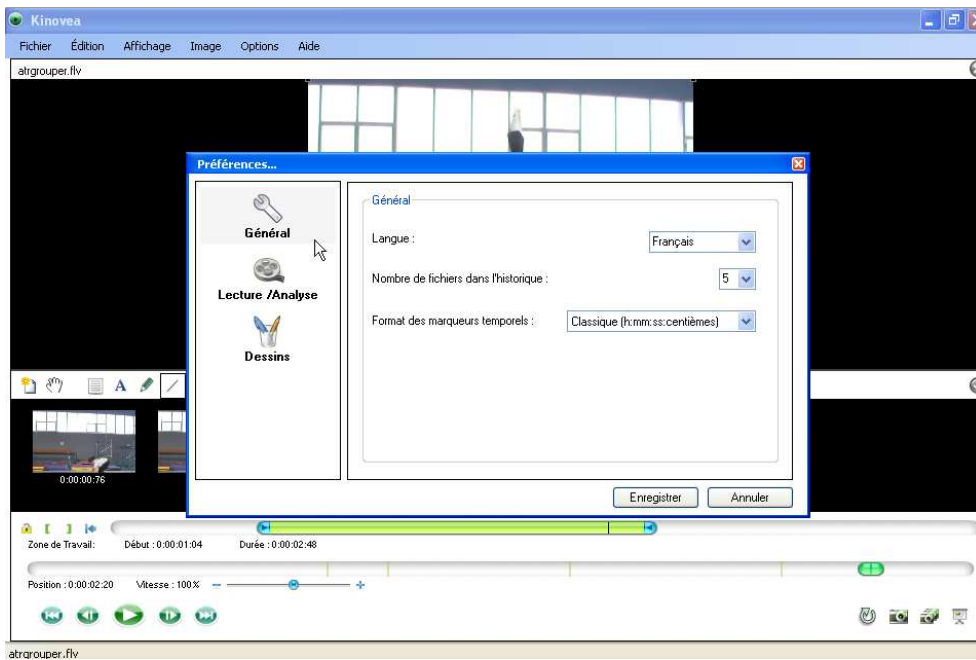
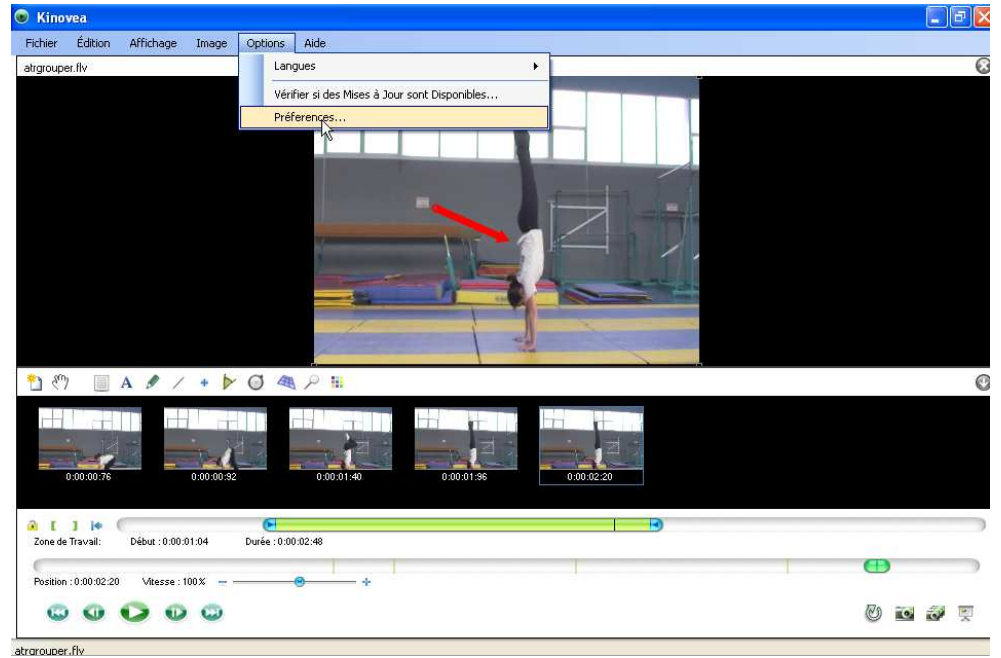
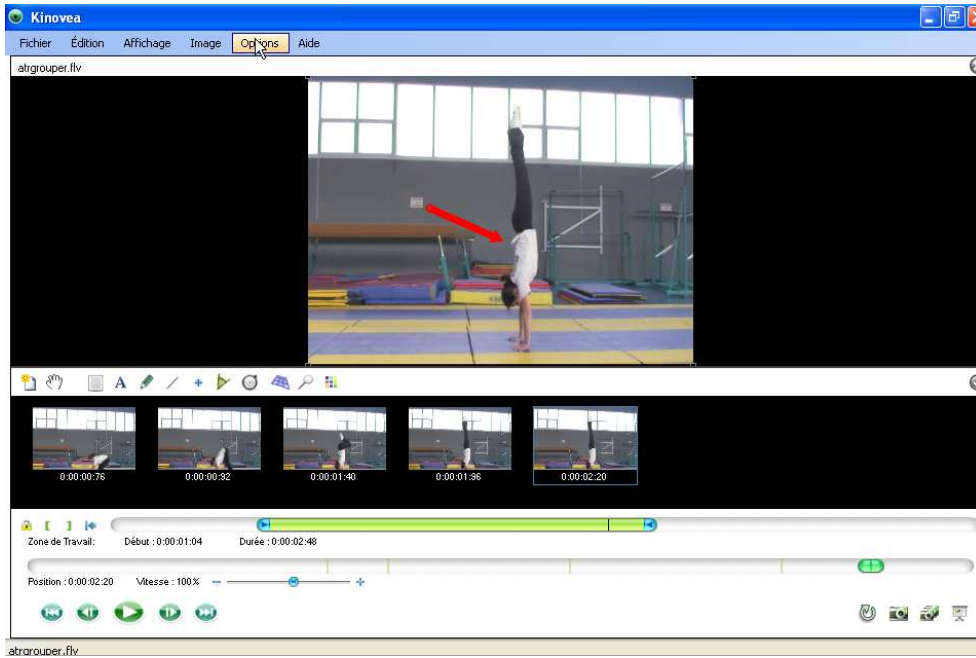












Fin du Tutoriel 2



Sylvie Lallet - Avril 2009