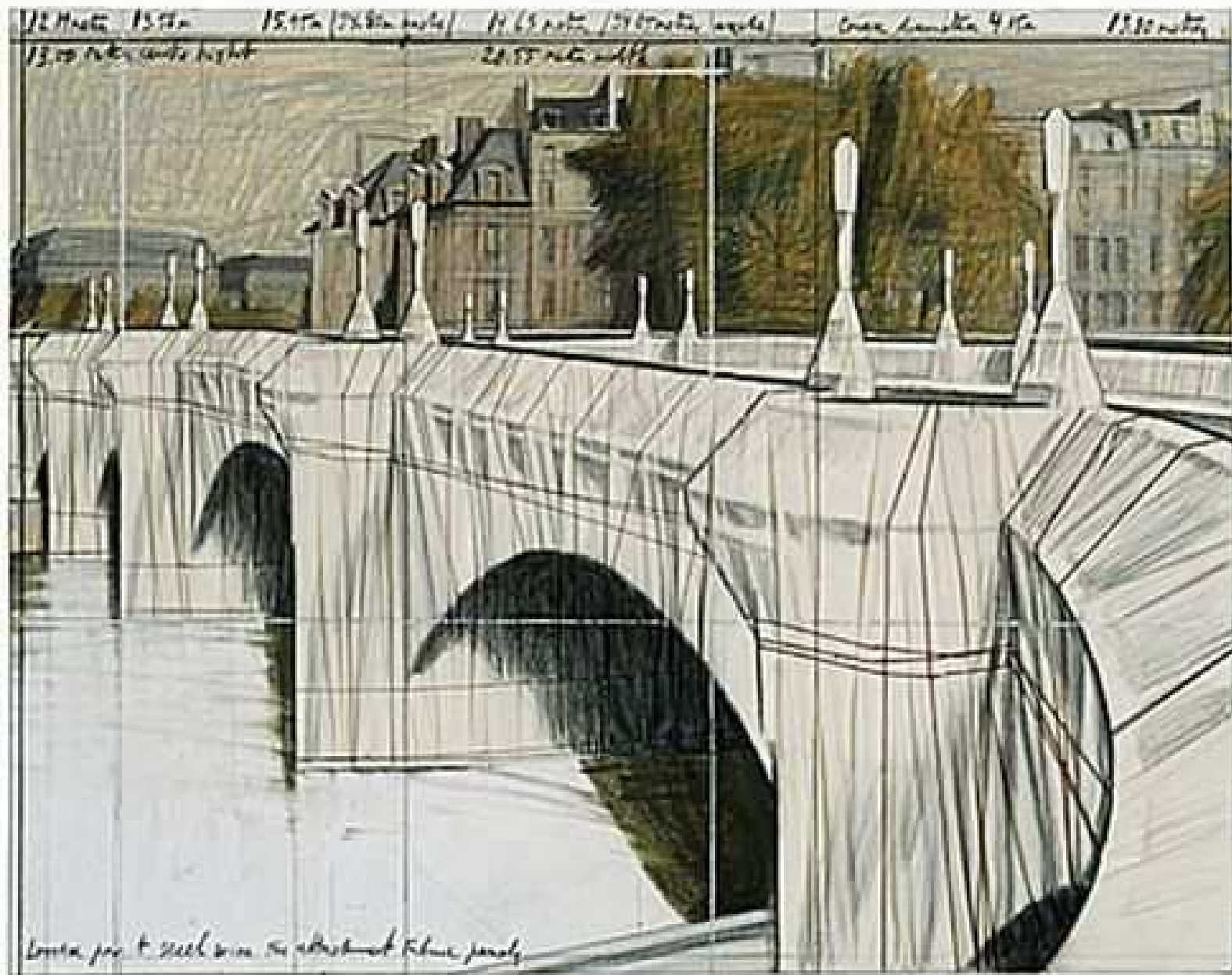
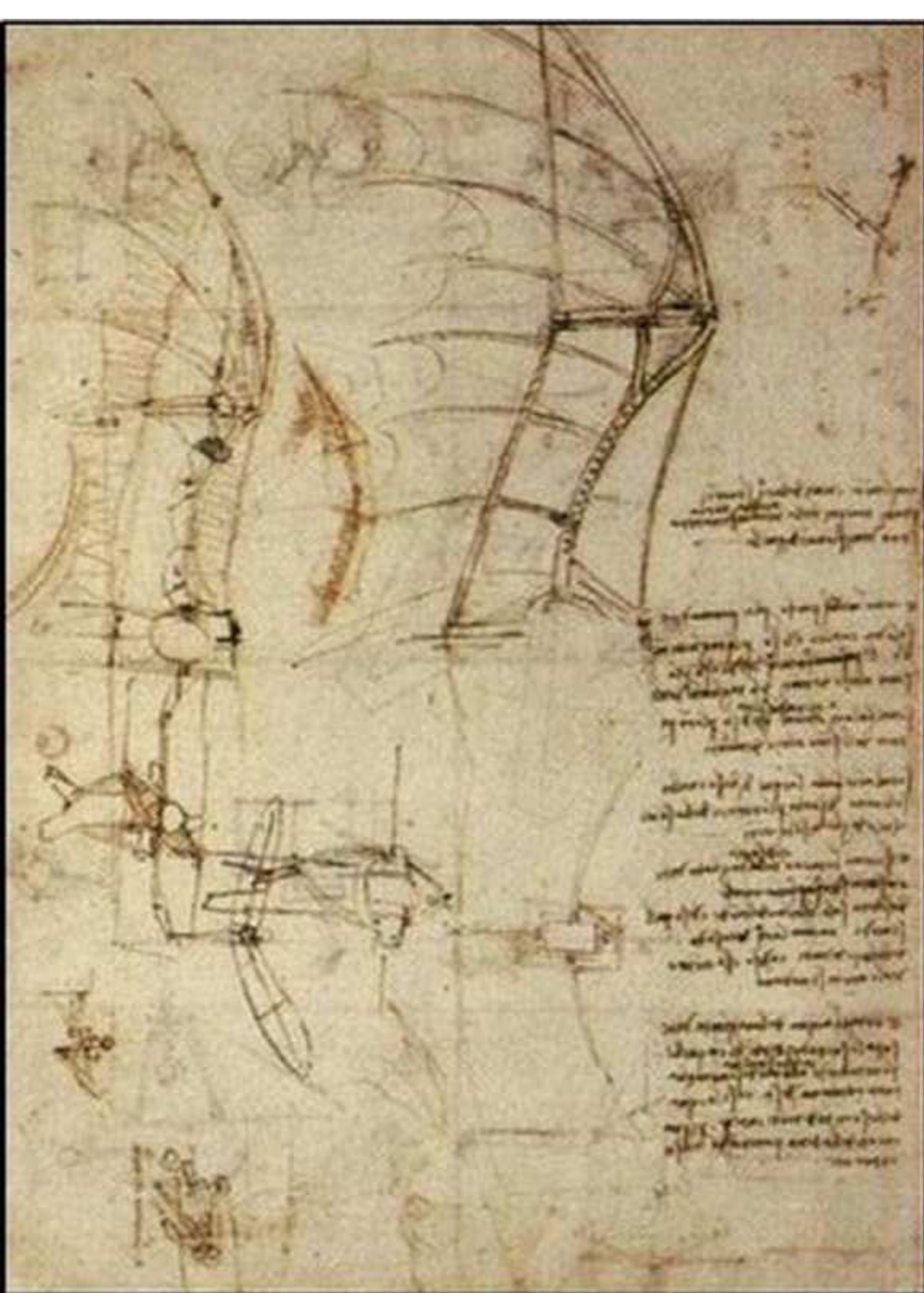


THE FOND MUSE WRAPPED / protect the stone / (Garden Louvre, side la pyramide, Ile de la Cité, D. de Conty, Paris de G. Auguste 1975



Louvre par t. steel wire for attachment Fibre panels





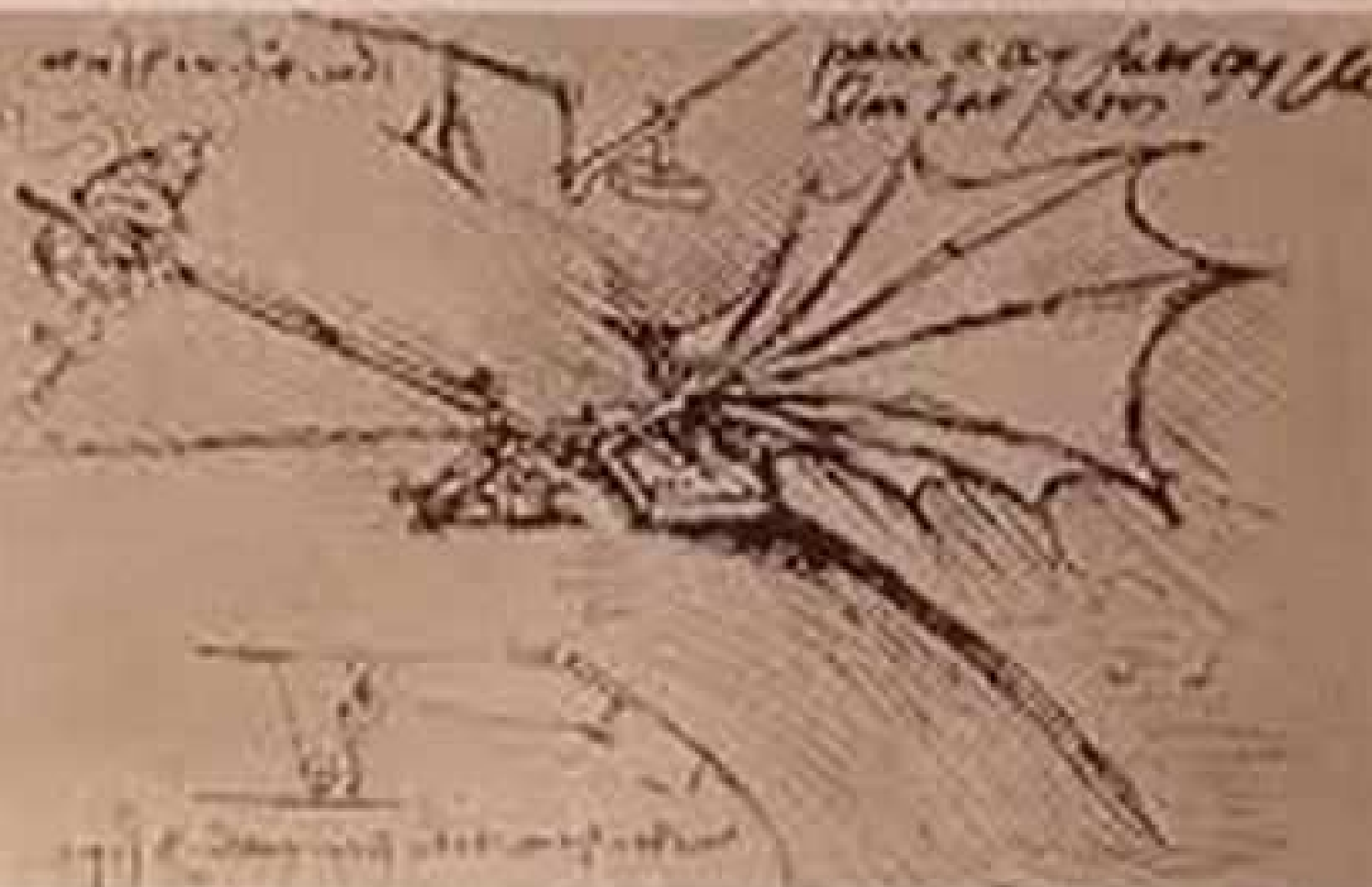
Exemple : Du dessin préparatoire au résultat

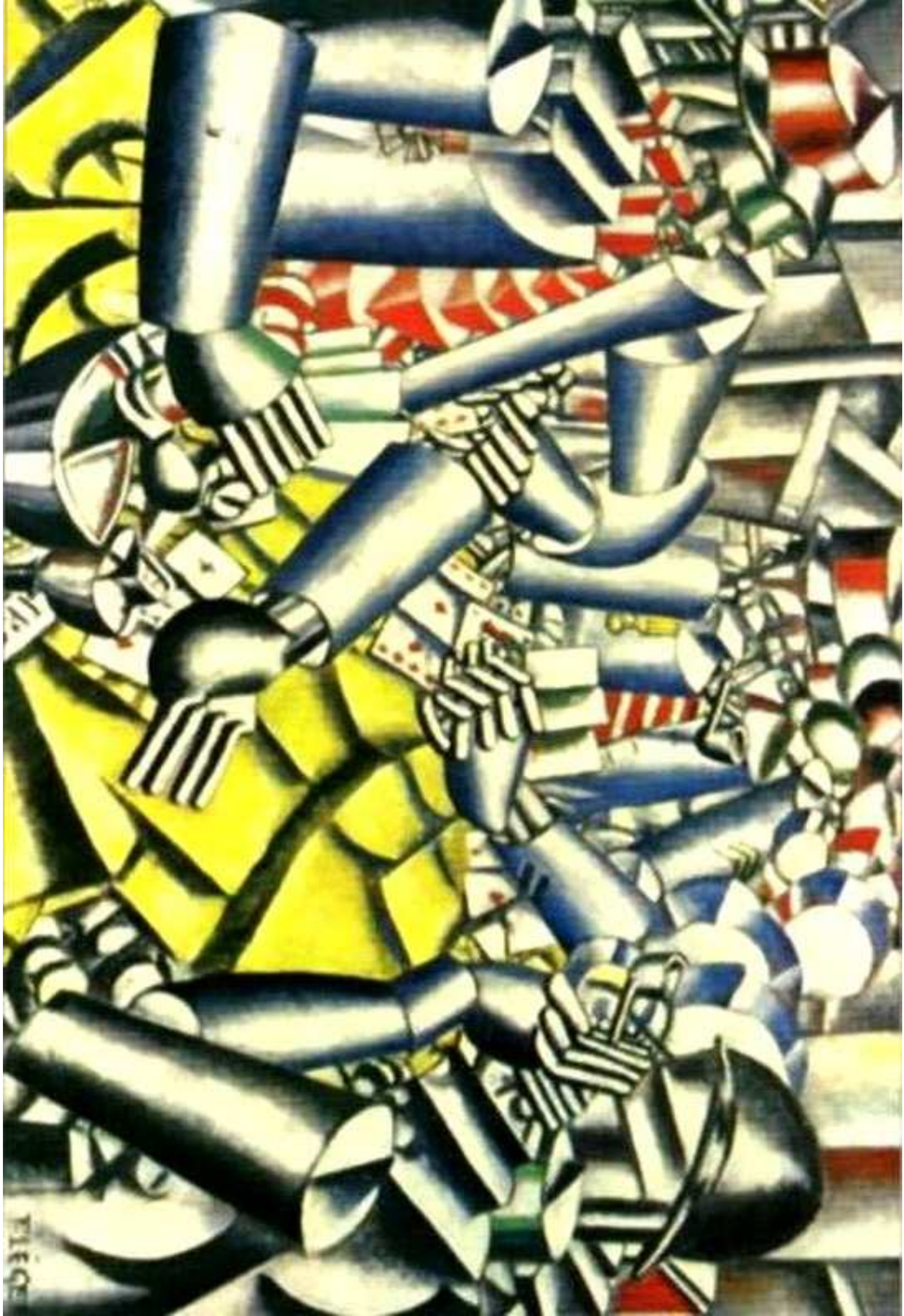
Les deux premiers dessins de *La Vierge, l'Enfant Jésus avec sainte Anne et saint Jean Baptiste* ont été fait en préparation de la composition du tableau *La Vierge, et l'Enfant Jésus et sainte Anne*.





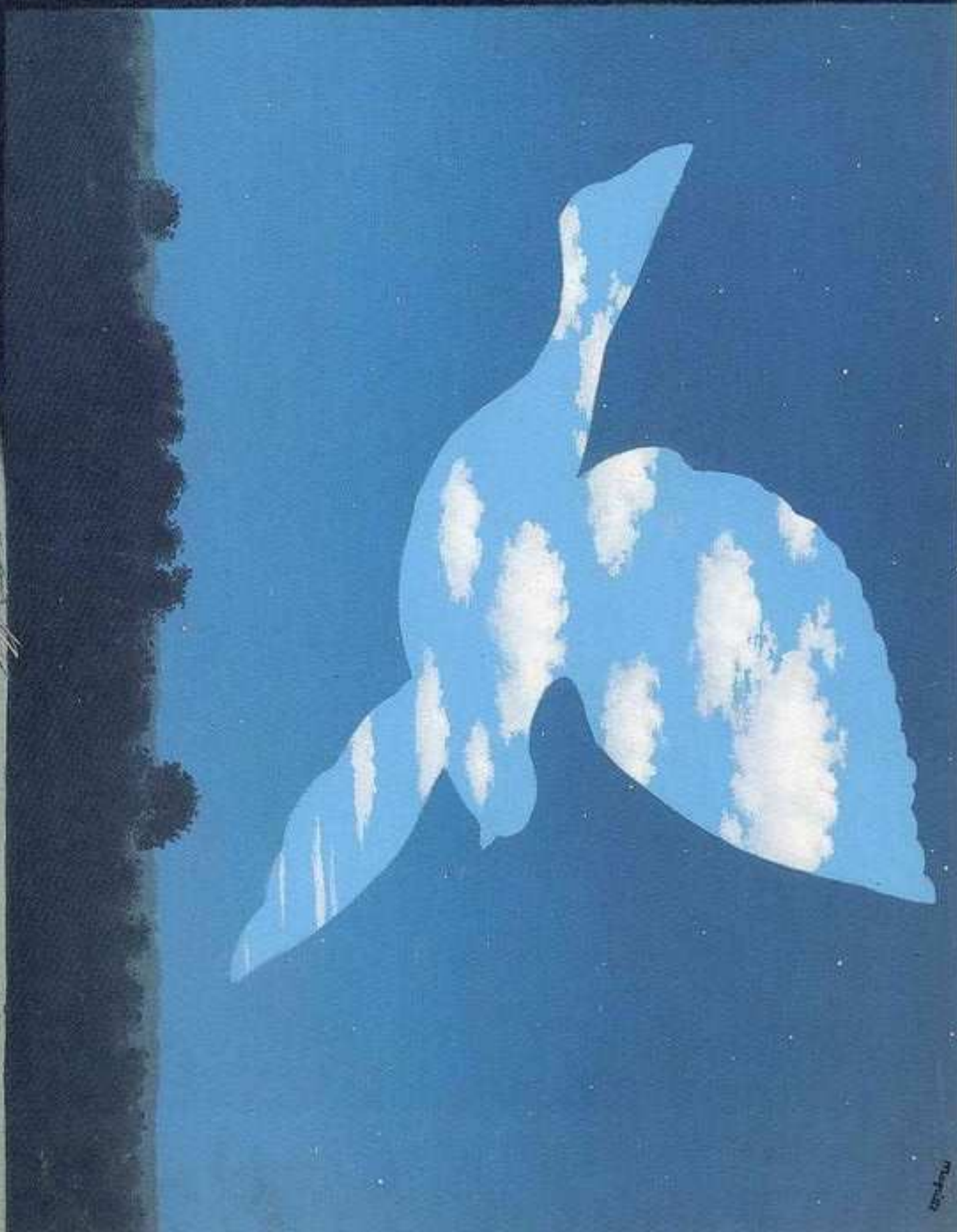
Handwritten text in a non-Latin script, possibly Urdu or Persian, located below the first sketch.



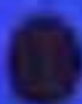








© 2010





Handwritten text in a cursive script, likely a historical manuscript or ledger. The text is arranged in several columns and appears to be a detailed record or account. The ink is dark and the paper shows signs of age and wear.

